

Tiger vs. Phil? No thanks • The soggy BMW in Philly

ILLINOIS GOLFER

DIGITAL EDITION

OCTOBER 2018



CLASS 2A GIRLS CHAMPION
LAUREN BEAUDREAU

Junior achievement

The Buzz

Joliet CC likely to semi-public

Joliet Country Club is expected to be open to the public in 2019, at least some of the time.

Pat Mudron, president of JCC and a member of the Joliet City Council, said as much in late October on WJOL Radio, revealing the golf membership of less than 200 had turned down a dues increase for 2019 that would have allowed the club to remain private.

“Our membership numbers have continued to fall off,” Mudron said on WJOL. “We’ve tried numerous different incentive packages to continue to be open, but this last year, we had less than 200 golf members.”

In a pair of meetings, Mudron said, it was explained “the budget for us is about \$1.4 million, and here’s where the dues structure is going to have to fall if we’re going to be able to continue.

“That went out to all the members, a vote was taken, and the response was not enough to continue going forward.”

The board went to Roc, Inc., the investment firm that has owned the club since buying it out of receivership from a bank in about 2010. The bank had foreclosed on the club after a renovation designed to draw new members failed to do so.

Mudron expects Roc, which will take over management of the course on Nov. 1, to hire one of the golf operations management firms it’s in the process of interviewing, after which it’ll be decided how and when the course would be open to the public. That may be decided by mid-November.

“That’s in my mind a strong possibility if we can’t find enough individuals to stay private,” Mudron said. “They have assured us there will be golf at the Joliet Country Club in the future.”

He added that most newer members the last few years have come from the Frankfort-Mokena-New Lenox area.

“The purists (among members) who want purely private will look at what the cost will be (at other clubs) and wait for the announcement from Roc on how this will be run,” Mudron said. “We’ve told them they have to come out with an announcement soon.”

Mudron knows the golf business has been in decline for years.

“The supply and demand of courses and players, it’s an industry that seems to be overbuilt, and the enthusiasm and the numbers have dwindled over the years, whether it’s time commitments for young families or too many courses in the area,” Mudron said.

NEW NAME, LOOK FOR McQs: It’ll be the Mistwood Golf Dome now, the Bolingbrook facility changing its name to match its co-owned course in Romeoville and adding TopGolf targets to make the golf dome experience more exciting. The dining and adjacent off-track betting facility remain.

EARLY BMW TICKETING: Through Nov. 7, the BMW Championship offers priority ticketing for 2019 at Medinah Country Club, with the lowest ticket price guaranteed. Details at www.bmwchampionship.com.

THE COVER Winner Lauren Beaudreau of Benet Academy starts her final round in the IHSA’s Girls 2A Championship on a cold morning at Hickory Point Golf Course in Decatur. / Tim Cronin / Illinois Golfer

IN THIS ISSUE

NEWS

BEAUDREAU STARS IN IHSA CHAMPIONSHIP	5
THE IHSA’S CONTROVERSIAL NEW LOOK	8
BRADLEY WINS THE BMW IN SOGGY PHILLY	9
KELLEN CAPTURES ILLINOIS PLAYERS	12
DAVIES DOES THE DOUBLE IN FRENCH LICK	13

OPINION

GRILL ROOM: LOW SCORE WINS, NO?	3
---------------------------------	---

DEPARTMENTS

AROUND ILLINOIS: THE DEERE’S RECORD HAUL	14
THE CALENDAR / THE SCOREBOARD	15
THE DIRECTORY	16
TOUR GUIDE	25

ILLINOIS GOLFER

OCTOBER 2018
DIGITAL EDITION · VOL. 4, NO. 8

PUBLISHED MONTHLY APRIL THROUGH DECEMBER,
WITH OCCASIONAL SPECIAL ISSUES

PUBLISHER & EDITOR **TIM CRONIN**
TRAVEL EXPERT **LEN ZIEHM**

JOIN US ONLINE AT WWW.ILLINOISGOLFER.NET
WRITE US AT P.O. BOX 541, WORTH, ILLINOIS 60482
E-MAIL US AT ILLINOISGOLFER@EARTHLINK.NET
CALL US AT (708) 638-1164
FOLLOW US ON TWITTER: @ILLINOISGOLFER

DISPLAY / CLASSIFIED ADVERTISING:
CALL (708) 638-1164 FOR PARTICULARS.

ILLINOIS GOLFER ASSUMES NO RESPONSIBILITY FOR UNSOLICITED MATERIALS OR CLAIMS OF ADVERTISERS. CAVEAT EMPTOR.

© 2018 ILLINOIS GOLFER LLC, A UNIT OF CRONIN MULTIMEDIA

The Grill Room by Tim Cronin

One of these things is not like the other

There's a lot you can buy for \$19.99 when it comes to golf.

At this time of year, you can grab 18 holes at some courses, and nine at many more.

You can hit a bookstore – remember those? – and find a golf book worth reading, and reading again. Go to a used bookstore and you can find a couple.

If you're lucky enough to go to the Masters, you can have lunch three or four times, the number depending on whether your libation is soft or a beer.

All are worthy reasons to dig a double saw-buck out of your pocket.

"The Match," the Tiger Woods vs. Phil Mickelson pay-per-view concoction slated for Black Friday in which the two multi-millionaires tee it up with each other for \$9 million of someone else's money, winner take all?

Not so much.

This seemed like a good idea at the time, if the time was a dozen years ago, with Woods at the top of the golf world and Mickelson grabbing a scrap of a major now and again. It would have been like "High Noon," only with wedges at 30 paces.

Today? It's more of a cash grab than your buddy offering an extra stroke on each side on the first tee, then pulling his new \$400 driver out of his bag.

Nobody asked for this now, and few are going



Illinois Golfer Archive (2)

NO CHOICE Which pay-to-see extravaganza would you shell out for? Must we ask?



to be suckered into paying for it. Pay-per-view television has many things going for it – no commercials, the ability to see a niche product for a

generally reasonable price, the cachet of the rare – but golf on a holiday Friday afternoon is not one of them.

Tiger vs. Phil is a thing of the past, or of the rare encounter when both are on their game and there's a real title, rather than just money, on the line.

Tiger vs. Phil would have been great if they were two of the four in the Skins Game, the original Thanksgiving weekend throwaway, which commenced in 1983 with Jack Nicklaus, Arnold Palmer, Gary Player and Tom Watson playing 18 holes across two days in Palm Springs and Vin Scully waxing eloquent about the foursome. NBC screened it from coast to coast, and with only one college football game and one NFL game against it on either day, it was a success.

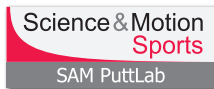
Your obedient servant is old enough to remember the weeks-long buzz leading up to the first fight between Muhammad Ali and Joe Frazier, back when pay-per-view meant going to a theater or arena to watch on the big screen. Ali-Frazier I was the biggest of them all. Fans at the Chicago Coliseum, a rat-trap on Wabash that was old when Chicago Stadium was new, rioted when the TV projector went out.

There will be no riots if the picture from the course goes askew on Black Friday. The hunch here is that so few will shell out for the experience, it'll be Red Friday for the backers.

As for Woods and Mickelson? Don't hold a tag day for either one.

mistwood golf club

Public Course. *Private Experience.*



M I S T W O O D P E R F O R M A N C E C E N T E R

PGA Instruction • Top 100 Club Fitter • Top 50 Practice Facilities

Book your appointment now at www.MPCGOLF.com

1700 W. Renwick Road | Romeoville, IL 60446 | 815.254.3333 | www.MistwoodGC.com

IHSA CHAMPIONSHIPS

Beaudreau, Sluzas stand out in the snow

New cut, bad weather overshadow quality play in prep finales

BY TIM CRONIN
REPORTING FROM DECATUR

The snow was one thing. It hit both in here, where the Illinois High School Association's two girls championships were taking place, and 40 miles north in Bloomington-Normal, where the three boys championships were simultaneously underway on Friday, Oct. 12.

Ranging between heavy flurries and just plain snow, it came down long and hard enough in the Twin Cities that the IHSA stopped play.

The final decision was quite another. The IHSA then canceled the first round entirely. Whereas virtually all golf associations long ago abandoned the concept of abandoning a round, instead resuming it as soon as possible, the IHSA sticks to the cobwebbed rules of yesteryear. The trio of boys tournaments would have only one round, that on Saturday.

For the boys, at least everyone would be around for the finish, however truncated.

In Decatur, the IHSA's new cut rule (see commentary, page 8) came into play. The bottom four teams of the 12 qualifying were sent home, as were the lower third of the individual qualifiers, which factored in the players from the four cut squads in this case. There, the snow let up and was replaced by tears.



Tim Cronin / Illinois Golfer

HAPPY HAPPY Class 2A winner Lauren Beaudreau (left) of Benet Academy was all smiles entering the final round, despite weather that would have kept all but the hardest players in the clubhouse. Lincoln-Way Central's Brianne Bolden (right) was thrilled when the Knights rallied in the final holes to grab the third place trophy.

The end result was a set of five tournaments where the winners were delighted as usual and those who did not win were more unhappy about the rules of the competition than the result itself.

Four boys in Class 3A, for instance, were under par at The Den at Fox Creek when the hooter blew. Barrington's Dominic Sclaetta and Loyola Academy's Peter Radler had turned in 2-under 34, while Lake Forest's Colin Jasper and Sandburg's

Max Farley had done so in 1-under.

Poof! Those scores disappeared when the ruling was made. On Saturday, only Radler was close to his Friday exploit, scoring 35-37-72 for an even par round, and finishing fifth. Scaletta double-bogeyed his 10th hole and shot 74. Farley fired an 80 with a triple at the 18th, the end of his first nine. Jasper shot 81, doubling the par-3 17th.

There was an odor about the whole process.

At the head of the fields, there was some remarkable golf given the horrible weather. First in that regard has to be Lauren Beaudreau, the Lemont resident who will graduate from Benet Academy in the spring and this time next year will be on Notre Dame's golf team. In the first round at Hickory Point Golf Course, she would have impressed the coaches from Alaska-Anchorage, firing an inward 5-under 31 on the back nine as the snow flew and hot chocolate became the menu item of choice.

She birdied five of the last eight holes, including a birdie 3 at the last, to score 5-under-par 67, an IHSA record for the course and one off the all-time IHSA standard of 66, set by Hailey Koschmann at Hickory Ridge in Carbondale in 2007.

"My approach shots were just lasers," Beaudreau said. "I was really hitting the ball great."

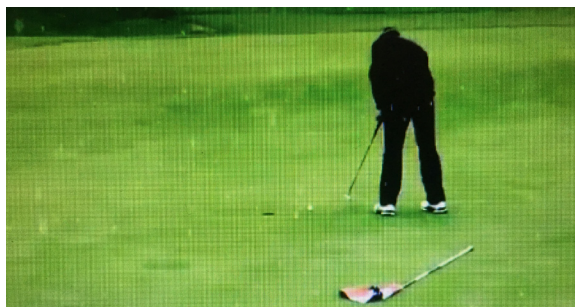
Beaudreau went on to collect the 3A title with a total of 4-under 140, which even fast-closing runner-up Brianne Bolden (141) of Lincoln-Way Central in Frankfort couldn't complain about.

"She shot 31 in the snow," Bolden marveled. "You've got to hand it to her."

For Beaudreau, it was a fitting sendoff to college, and made her decision to return to prep golf this fall a wise one. She played junior tournaments last fall, which meant she couldn't also play in IHSA-sanctioned tournaments.

"This is the reason I came back to play high school golf this year," Beaudreau said.

Bolden and fellow Central senior Grace Curran (150) were the key players in lifting their team to third place, the last trophy spot, edging New Trier in the final few holes. That drama almost overshadowed the winning effort of St. Charles North, which scored 34-over 610 and was paced



IHSA State via Twitter

SNOW WAY! Conditions at the three Bloomington-Normal area courses used for the boys championships deteriorated in the afternoon when snow hit and all play was suspended. The round was wiped out rather than continued on Saturday morning, when there would have been time to play another nine.

by Megan Fortney, whose 1-under 143 took third. Barrington finished second, eight strokes behind.

In Girls 1A, on the other side of town at Red Tail Run Golf Course, Katie Steinman of Bloomington Central Catholic tied for sixth individually and led her team to the team crown, beating downstate small-school power Massac County by seven strokes. Pinckneyville, paced by Megan Breslin, was third.

Dani Grace Schrock scored rounds of 76 and 70 for 2-over 146 to win the 2A title by a stroke over Macomb's Emma Thomas and by two over sister Ali Schrock and Eureka's Allison Pacocha, the latter opening with a 71 for the overnight lead but taking 77 on Saturday.

Beaudreau wasn't the only player to post a 31 during the weekend. Lockport Township sophomore Ben Sluzas accomplished the feat on Saturday, when the boys 3A competition finally counted. Sluzas went out in 1-over 37 on the back nine of The Den at Foz Creek, then ignited on the course's front nine for 5-under 31, including a

birdie-eagle finish, to win the individual title with 4-under 68. That beat Lincoln-Way Central's Sean Curran – the aforementioned Grace's brother – by a stroke.

He birdied the par-3 eighth, then hammered a hybrid 220 yards into the wind to within eight feet on the par-5 ninth. Sinking the putt placed him ahead of Curran.

"I couldn't have really done it better," Sluzas said. "This is amazing. To do it here is just awesome."

The Boys 3A team title went to the wire, and Hinsdale Central claimed it, the Red Devils' top four players scoring 9-over 297, a stroke better than Stevenson and two ahead on Lockport. The difference could have been a saved shot or long putt by any of Hinsdale Central's players, but the par 72 round by Mac McClear went a long way toward his team getting to the top.

Led by Preston Smith's 3-over 74, Charleston edged Benton by a stroke, 312-313, in the Boys 2A championship at Weibring Golf Course at Illinois State, with Quincy Notre Dame three strokes back. The first eight schools were within 10 strokes, and ninth-place Dunlap was 11 back, calling into question the IHSA's cut concept. It would have fallen if Friday's round had been completed, and if those were Friday's scores, Dunlap would have been on the outside looking in.

T.J. Barger of Bloomington won the 2A individual title with a 3-under 68, three ahead of Alex McCulla of Quincy Notre Dame.

In Boys 1A at Prairie Vista Golf Course, Effingham St. Anthony rode Luke Ludwig's 4-over 76 to a six-stroke win over Riverdale of Port Byron. Marcus Smith of Winnebago scored 3-under 33 on the back nine for a 1-under 71 and a three-stroke victory over Beardstown's Chase Pichler.

2018 IHSA Championships October 12-13

Girls 1A

Red Tail Run GC • Decatur • Par 72

Team		
Bloomington Central Catholic	340-328-668	+ 92
Massac County	342-333-675	+ 99
Pinckneyville	344-343-687	+111
St. Thomas More	350-342-692	+116
Alton Marquette	349-351-700	+124
Chicago Latin	363-354-717	+141
Wheaton St. Francis	360-361-721	+145
Providence Catholic	360-376-736	+160
Metamora	366	+ 78
Geneseo	367	+ 79
Rochester	385	+ 97
Williamsville	386	+ 98

Individual Leaders

Dani Grace Schrock, Pontiac	76-70-146	+ 2
Emma Thomas, Macomb	75-72-147	+ 3
Allison Pacocha, Eureka	71-77-148	+ 4
Ali Schrock, Pontiac	74-74-148	+ 4
Megan Breslin, Pinckneyville	77-74-151	+ 7
Carolyn Pacocha, Eureka	78-74-152	+ 8
Katie Steinman, Bloomington C. Cath.	79-73-152	+ 8

Girls 2A

Hickory Point GC • Decatur • Par 72

Team		
St. Charles North	307-303-610	+ 34
Barrington	320-298-618	+ 42
Lincoln-Way Central	324-300-624	+ 48
New Trier	320-327-627	+ 51
Stevenson	323-306-629	+ 53
Loyola Academy	318-317-635	+ 59
Naperville North	325-321-646	+ 70
Hinsdale Central	327-333-660	+ 84
Illinois State Univ. High	336	+ 48
Glenbrook South	340	+ 52
Sacred-Heart Griffin	341	+ 53
Edwardsville	351	+ 63

Individual Leaders

Lauren Beaudreau, Benet Academy	67-73-140	- 4
Brianne Bolden, Lincoln-Way Central	74-67-141	- 3
Megan Furtney, St. Charles North	71-72-143	- 1
Penelope Tir, New Trier	73-74-147	+ 3
Maria Perakis, Glenbrook South	74-74-148	+ 4
Sarah Arnold, St. Charles North	77-72-149	+ 5

Boys 1A

Prairie Vista GC • Bloomington • Par 72

Team		
Effingham St. Anthony	318	+30
Port Byron Riverdale	324	+36
Hillsboro	330	+42
Carmi-White County	335	+47
Sullivan	337	+49
Newman Central Catholic	341	+53
Sherrard	354	+66
Rockridge	359	+71
North Shore Country Day	359	+71
Tremont	361	+73
Downs Tri-Valley	363	+75
Beecher	372	+84

Individual Leaders

Marcus Smith, Winnebago	38-33-71	- 1
Chase Pichler, Beardstown	39-35-74	+ 2
Caden Ellis, Sullivan	38-38-76	+ 4
Luke Ludwig, Effingham St. Anthony	40-36-76	+ 4
Anthony Ruthey, Port Byron Riverdale	39-38-77	+ 5
Four players tied at 78		+ 6

Boys 2A

Weibring GC at Illinois State • Normal • Par 71

Team		
Charleston	312	+28
Benton	313	+29
Quincy Notre Dame	315	+31
Nazareth Academy	318	+34
St. Viator	319	+35
Benet Academy	320	+36

Kaneland	321	+37
Wheaton St. Francis	322	+38
Dunlap	323	+39
Crystal Lake South	325	+41
Rock Island Alleman	326	+42
Belleville Anthonoff Catholic	348	+64

Individual Leaders

T.J. Barger, Bloomington	36-32-68	- 3
Alex McCulla, Quincy Notre Dame	34-37-71	E
Brendan Luster, Benton	37-35-72	+ 1
Drew Hudgins, Carbondale	33-39-72	+ 1
Preston Smith, Charleston	36-38-74	+ 3
Will Marshall, Kaneland	37-37-74	+ 3

Boys 3A

The Den at Fox Creek • Bloomington • Par 72

Team		
Hinsdale Central	297	+ 9
Stevenson	298	+10
Lockport Township	299	+11
Lake Forest	303	+15
Loyola Academy	304	+16
Geneva	309	+21
Barrington	310	+22
Illinois State Univ. High	310	+22
New Trier	312	+24
Fenwick	319	+31
Homewood-Flossmoor	322	+34
Waubonsie Valley	324	+36

Individual Leaders

Ben Sluzas, Lockport Township	31-37-68	- 4
Sean Curran, Lincoln-Way Central	34-35-69	- 3
Aidan Lafferty, Downers Grove North	37-34-71	- 1
Will Troy, Waubonsie Valley	37-34-71	- 1
Peter Radler, Loyola Academy	35-37-72	E
Mac McClear, Hinsdale Central	36-36-72	E
Garrett Tighe, Jacobs	39-33-72	E
Mark Noonan, Stevenson	37-35-72	E

IHSA's cut concept fails its players

COMMENTARY
BY TIM CRONIN
FROM DECATUR

The old saying that the road to hell being paved with good intentions came to mind regarding the Illinois High School Association's golf championship. The implementation of a cut after 18 holes – one implemented, the IHSA said, following input from coaches – was received with anything but pleasure by the coaches on hand at the five state high school championship sites, and by those whose teams didn't qualify.

The IHSA announced that a survey of coaches after last year's tournament indicated widespread support to eliminate the last four of 12 qualifying teams and the bottom third of the remaining individual qualifiers after one round.

Not true, Naperville North boys coach Barry Baldwin discovered. He surveyed coaches and discovered only 5.11 percent (16 of 313 coaches) even received a survey. The overwhelming majority (91.12 percent, or 204 of 313) didn't want a cut. And 77.39 percent of the coaches Baldwin surveyed had subsequently contacted the IHSA after the cut was approved to protest the move.

The IHSA's minutes of the meeting when the cut was approved said doing so would "create a better experience for participants." How sending a third of the field home would be better for that third of the field is beyond us.

The concept of high school sports goes beyond determining a winner. It's also meant to be

PLAYER/ SCHOOL	FIRST DAY			SECOND DAY			TWO-DAY TOTAL
	FRONT	BACK	TOTAL	FRONT	BACK	TOTAL	
Bella Bartolone Eldorado (York)	44	44	88			MC	
Kaitly White Frankfort (Lincoln-Way East)	46	50	96			MC	
Kirsten Osborn Galesburg (HS)	41	38	79				
Michelle Zhang Hoffman Estates (Conant)	41	41	82				
Maddy Palmer Joliet (Central) (Coop)	45	43	88			MC	
Maggie Micetich Lombard (HS)	39	43	82				
Lauren Beaudreau Lisle (Benet Academy)	36	31	67				

Tim Cronin / Illinois Golfer

OUT THE DOOR It took 11-over-par 83 for an individual to make the cut at the girls Class 2A tourney.

a formative experience for those participating. The golf state championships, which have never had a cut – weather woes aside – are supposed to be a celebration as well as a competition. Canceling the participation of a third of the field halfway through is like sending revelers home at 10 p.m. on New Year's Eve.

No coach I spoke with, both at the Girls 2A championship in Decatur and prior to that, was in favor. Many inequities were pointed out, including the likelihood of different weather from morning to afternoon in a one-day tournament, which could affect scores – snow hit all five championship sites on Friday, causing the cancellation of play for all three boys classes – and the tightness of the fields.

The best example was 2008's Class 2A boys tournament. Illinois State University High was ninth after one round, just 15 strokes behind the leader, Sacred Heart-Griffin. This year, they would have been sent packing since they weren't

among the top eight teams. In the second round, U-High raced through the pack and won the title, beating Sacred Heart-Griffin by three strokes.

The only completed round for the boys tournaments this year offered the potential for similar comebacks. In 3A, ninth-place New Trier was only two strokes behind Barrington and ISU High, which tied for seventh, and 15 strokes behind winner Hinsdale Central. (Only 27 strokes, 6.75 per player, separated Hinsdale Central and last-place Waubonsie Valley.)

In Boys 2A, eighth-place Wheaton St. Francis scored 322, ninth-place Dunlap 323, 10th-place Crystal Lake South 325, Rock Island Alleman 326, 14 strokes behind winner Charleston. How can any of those teams behind St. Francis be sent home?

Aside from the experiential and competitive reasons let everyone play, there are logistical problems. A team being cut may still have a player or two make the final round as an individual. Do the others go home with their parents – who also might have booked Saturday night in a hotel – or stay and root their classmates on?

The IHSA has created a mess for no logical reason. Supposedly, weakness at the bottom of the 1A fields for boys and girls was the impetus for the cut, though given the control of the association by the small-school principals – the IHSA is a one-school, one-vote group, regardless of school size – that's not likely to be admitted.

This was a move made to solve a problem that doesn't exist. It made no sense, created ill feelings, and ought to be reversed.



BMW CHAMPIONSHIP

Two steps forward for Bradley

Former PGA champ scores at Aronimink

BY TIM CRONIN

REPORTING FROM NEWTOWN SQUARE, PENNSYLVANIA

Six years removed from his last victory, Keegan Bradley had receded into the memories of many. He'd won a PGA Championship, he had a quirky stutter-step approach to the ball, and he was LPGA legend Pat Bradley's nephew.

As he discarded the long putter when the anchoring bad was implemented, he'd also disappeared from leader boards.

He's back. Scoring a tournament-record 20-under-par 260 brought him back, but he still needed to beat Justin Rose, who nearly always wins when big-time golf comes to Philadelphia.

It took a playoff, but Bradley pulled it off, saving par while Rose bogeyed on the first playoff hole at Aronimink Golf Club on Monday, Sept. 10, to capture a rain-soaked and mud-caked BMW Championship.

Not bad for someone who went to bed Saturday night knowing he was within the top 30 for Tour Championship qualification thanks to big par putts on the last two holes of his third round, and would stay there if the final round was wiped out.

"It was the weirdest couple of days," Bradley said. "I thought, man, if they call it I'm good, but I'm also glad I'm only three back. Thankfully we got out here and played, and I made it to Atlanta and more now."

Bradley, who finished with his second 6-under 64 of the week, had birdied the 14th, 16th and 17th holes to get to 21-under and the lead, but bogeyed the

Charles Cherney / Western Golf Association

ALL THE WAY BACK Keegan Bradley exults after his winning playoff putt.





last with a drive to the muddy left rough and an approach into the luxury suites to the right to fall back to 20-under.

“I played that 18th hole so bad,” Bradley said. “A mud ball on my second but a bad putt and the worst drive I hit all week. It left a bad taste in my mouth.”

Rose came in at 260 in the following group via a closing 3-under 67. He also bogeyed the last, leaving his second shot well short when his 4-iron was killed by a gust of wind, then failing to save par.

They would play the 18th again, and this time Bradley found the fairway, put his second in the collar 23 feet from the cup, and got up-and-down for his four.

Rose had made all 48 putts inside of five feet in regulation, but in the playoff from 7-feet 8 inches, he found the left edge. Bradley had no trouble converting from 17 inches for his first victory since 2012 at Firestone, erasing the bad taste. Within seconds, he was lifting wife Jillian and son Logan in the air as high as he’d lift the J.K. Wadley Cup.

“I thought to win and to have my son there, that would be the most incredible feeling,” Bradley said. “I’d seen it on TV so much. That was just awesome.”

His ride from PGA champion and a three-time winner, the last time at Firestone in 2012, to the bottom and back up was a difficult one, complicated by changing from the long putter to a conventional one.

“I went back and forth from an arm lock to a short putter, but I didn’t get mechanical with the long putter,” Bradley said. “When I got my swing to where it is, I was able to really sit down and focus on the fundamentals of putting with an arm



Charles Cherney / Western Golf Association

FAMILIAR FACE Tiger Woods finished tied for sixth after opening with a 27-putt 62. putter.”

Bradley said watching Webb Simpson adapt similarly helped him immensely.

Two weeks ago at the first playoff tournament at Plainfield Country Club, he was in the final twosome after a third-round 62. He shot 78,

and it looked like the Bradley of old was replaced by an old Bradley.

Not so Monday, when the delayed final round was conducted.

“I was calm today,” Bradley said. “I wasn’t calm that day.”

Part of his demeanor came from eyeing the leader boards, a departure from his norm.

“There were so many players up there and the quality of the players, I needed to know,” Bradley said. “It made me feel calm, which is rare.”

Rose climbed to No. 1 in the world rankings anyway, a decent enough consolation prize.

“It’s a boyhood dream,” Rose said of the achievement, which comes without a trophy but with a great deal of pride.

There almost wasn’t a playoff. Rose hit his third shot on the 72nd hole to 16 feet and had a nearly-straight putt to save par and win.

“I hit a great putt in regulation to win it,” Rose said. “It’s the best putt I’ve ever hit to try and win a tournament.”

It lipped out on the right side, prompting groans from those in the gallery of about 5,500 fans playing hooky from work on a dreary day.

“It’s obviously a big consolation being world No. 1,” Rose said. “That’s something I will look back on and think it was an incredible achievement, an incredible moment.

“Give me a half-hour maybe and I might be able to say I really enjoyed it.”

Billy Horschel (closing 6-under 64) and Xander Schauffele (3-under 67) tied for third at 19-under 261. Horschel raced to an opening 5-under 30, but a bogey on the par-4 15th, sandwiched between a pair of birdies, hurt his cause. Schauffele rallied with birdies on the 15th and 17th, and needed one more.



Tim Cronin / Illinois Golfer

EDIFACE COMPLEX There was no shortage of luxury seating around Aronimink's 18th green, but the suites on the left of the photo – the golfer's right on the slight dogleg-right hole – proved too close to the green when several shots clanged off the steel to carom about the premises. Free drops in front of the structure were plentiful.

Rory McIlroy had a day that might have been spectacular. He hit 16 of 18 greens and made but two birdies on a bogey-free day, finishing solo fifth with a 68 for 18-under 262.

Tiger Woods, whose first-round 62 brought back memories of what he could do on command earlier in his career, gave it a late run, but his 5-under 65 for 17-under 263 and a share of sixth with Webb Simpson wasn't enough. In retrospect, his even-par 70 on Friday was the damper on his week. The field averaged 67.333 strokes that day, and he failed to take advantage.

"At the end of the season, to make it back to the Tour Championship after all I've been through is a pretty good accomplishment," Woods said.

Woods is also exempt into next year's U.S. Open. His 10-year pass from his 2008 victory ran out this year.

The moment, though, belonged to Bradley. Undoubtedly a cowbell or two was rung back home in Massachusetts, that tradition started by

the parents of aunt Pat after her triumphs. How he played all week rang especially true on Monday.

Around Aronimink

Bradley won \$1.62 million. Rose settled for \$972,000. Brian Harman, 68th and last, collected pocket change of \$18,360. ... Bradley, who started the week 52nd, and Xander Schauffele moved into the top 30 to earn a berth in the Tour Championship. Emiliano Grillo and Jordan Spieth fell out of the charmed circle. ... Paul Casey withdrew before the round, citing a bad back. He was locked into the Tour Championship, having arrived at Aronimink 17th in the standings. ... Ryan Armour's 6-over 76 was the high round of the week and dropped him from a tie for 21st to a tie for 51st. ... The field averaged 68.912 for round four and 67.884 for the week, the first time a PGA Tour tournament field has averaged under 68 strokes. The last two rounds were played under lift, clean and place. ... It was the 18th playoff in Western Open / BMW Championship history, and the first

since 2000, when Robert Allenby beat Nick Price at Cog Hill. ... The scoring mark of 260 eclipsed by a stroke the 261 fired by Marc Leishman last year at Conway Farms Golf Club. Leishman tied for 41st at 6-under 274. ...

Sunday turned out to be a complete wash-out thanks to more rain on top of downpours that began Thursday night. As PGA Tour vice president of rules and competition Slugger White said, "We've got kind of a mess out there." With another inch of rain falling on an already inundated course by 2 p.m. (2.4 inches fell overnight Thursday into Friday), the chance for any play on Sunday was unlikely, but the Tour kept assessing until it was obvious they would run out of daylight. White has been with the PGA Tour forever, and knows his messes. "We had iffy (low-lying) fairways, sloshy tee boxes," White said. "The greens were fine and bunkers were OK, but we had nowhere to move the water. We're shoving sand against the tide." ... **Scoring on Page 15.**

ILLINOIS PLAYERS CHAMPIONSHIP

Kellen wins by two in Galena; Johns takes PoY

Maun-Nah-Tee-See pro wins at Eagle Ridge; Medinah teaching pro's season title his fourth

FROM IG NEWS SERVICES

Jeff Kellen gave up the vagabond existence of the mini-tours and the end of last year to come back to his home town of Rockford, and landed at the private Maun-Nah-Tee-See club as an assistant pro.

He did not give up his game. Kellen scored three wins in Illinois PGA tournaments this season, with his final victory in the final state major of the year, the Illinois Players Championship.

Kellen stitched together back-to-back 4-under-par 68s on Sept. 24-25 on Eagle Ridge Resort's North Course in Galena to score 8-under 136 and beat Medinah Country Club teaching pro Travis Johns by two strokes. Johns had closed with a 68 after an opening 70.

While Kellen won the title, Johns collected the Illinois PGA Player of the Year championship, doing so for the fourth time in eight years. The 480 points he collected for second moved him past Brian Carroll of Royal Hawk Country Club by 143 points for the top spot on the table. Johns, an Australian who came to the Chicago area from Dallas in 2010, finished in the top 10 in all 10 tournaments he entered.

"To win my fourth Player of the Year award is a great honor," said Johns. "I could not have won without the support of my professional colleagues and members at Medinah."

Kellen's title locked in his IPGA Assistant



Nick Novelli / Illinois PGA

BACK HOME AGAIN Jeff Kellen made the most of his first year in the Illinois PGA Section.

Player of the Year award, beating Mistwood Golf Club's Andy Mickelson by 813 points. Mistwood's Chris Ioriatti was third in the race.

"To win Assistant Player of the Year was a goal of mine this season and to win it is very exciting for me. I couldn't be happier," said Kellen.

Kellen, including an eagle on the par-5 fifth hole, was 4-under on the par-5s in his final round, which helped him carry the day. Johns was 3-under on the three-shotters.

Mickelson, Kyle English (Crestwicke) and Steve Orrick (CC of Decatur) tied for third at

4-under 140, with Skokie's Garrett Chaisard a stroke behind that trio.

Roy Biancalana of St. Andrews had opened with a 67 and held the overnight lead, but opened the final round with a bogey and added five more en route to a 4-over 76 for 1-under 143. He tied for 10th, but subsequently scored a fourth-place finish in the IPGA Senior Players Championship at Old Elm Club to lock up the Senior Player of the Year honor, a stylish return to golf after a decade almost totally away from the game while working as a relationship coach.

2ND SENIOR LPGA CHAMPIONSHIP

There is no one like this Dame

Laura Davies sweeps senior women's majors for 2018

BY LEN ZIEHM

REPORTING FROM FRENCH LICK, INDIANA

There's no doubt who the best senior woman golfer was this year. England's Dame Laura Davies won the inaugural U.S. Senior Women's Open and the 2nd Senior LPGA Championship convincingly.

Davies was as dominant in the Senior LPGA at the French Lick Resort as in the Open at Chicago Golf Club. Davies won in Wheaton by 10 strokes and went wire-to-wire in the Senior LPGA, which concluded on Wednesday, Oct. 17, on the Pete Dye Course, scoring 2-under 70 in the final round to beat Sweden's Helen Alfredsson and Italy's Silvia Cavalleri by four strokes.

"It was a real victory for me," said Davies, who won her 87th tournament worldwide with 8-under-par 208 for 54 holes. "I played OK here before but never strung three rounds together."

Davies was third in the first major tournament for senior women pros last year, when England's Trish Johnson won the title.

"I started with a three-shot lead, then it was a no-shot lead," Davies said. "On this course you can't take anything for granted."

Davies pulled away from Alfredsson and Cavalleri on the front nine after they were tied at 5-under-par six holes into the round.

French Lick Resort

TOP OF THE HEAP

Laura Davies handled every shot necessary to capture the Senior LPGA Championship and sweep the senior women's majors for the year.





AROUND ILLINOIS

Deere raises \$13.45 million

Record brings Birdies for Charity total to \$107 million

FROM IG NEWS SERVICES

This year's John Deere Classic raised a record \$13.45 million for 534 local and regional charities, an increase of \$1.18 million over the previous year, tournament officials announced Wednesday, Oct. 31, at John Deere World Headquarters.

Tournament officials said each participating charity will receive an 8.2 percent bonus payment on top of the money raised through the Birdies for Charity program – 64 percent more than the tournament guarantee of a five percent bonus.

The John Deere Classic now has helped raise a total of \$107 million for charity since the tournament began in 1971, with \$104.5 million – 98 percent – coming since John Deere assumed the title sponsorship in 1998.

“Everyone involved with this charitable mission is proud and very appreciative of the individual donors, companies, and local foundations who made 2018's charitable total the largest in tournament history,” tournament director Clair Peterson said.

The \$13.45 million total works out to \$35.88 for each of the Quad Cities' 375,000 residents, again making the John Deere Classic the No. 1 in per capita contributions on the PGA Tour.

Overall, the John Deere Classic ranks among the top three in charitable giving on the PGA Tour.

This year, 2,355 birdies were recorded from Wednesday through Sunday during the John Deere Classic pro-am and tournament rounds at TPC Deere Run in Silvis. Individuals who pledged a penny per birdie would donate \$23.55 to their designated charity or charities. Other individuals, foundations and institutions donate lump sums.

John Deere Classic officials on Wednesday also gave away a two-year lease on a Lexus NX – courtesy of Lexus of Quad Cities – to one of two finalists who came closest to guessing the exact number of birdies this year. Both received a key, and the person whose key started the car won it.

The free Lexus NX lease program annually serves as an incentive to potential donors to participate in the Birdies program. Lexus of Quad Cities also provides courtesy cars for John Deere Classic contestants and on-course evacuation vehicles.

“Birdies for Charity is extremely grateful that Lexus of Quad Cities has made such a strong commitment to the John Deere Classic and to the hundreds of charities we serve in the Quad Cities and neighboring communities,” said Birdies for

Charity director Kristy Ketcham-Jackson.

The total amount donated to the charities is the result of a three-pronged fundraising effort:

- The tournament's Birdies for Charity program enables individuals, companies, and foundations to pledge to a charity or charities of their choice either a minimum of one cent for each birdie recorded at the tournament from Wednesday-Sunday or in lump sum donations.

- Because John Deere underwrites the administrative costs of the Birdies program, 100 percent of each Birdies pledge collected goes to the core mission of the designated charities rather than to administrative, operational, or fundraising activities.

- The Bonus Fund consists of tournament revenues, direct donations, a John Deere Foundation matching grant, as well as proceeds from special events, such as this year's Lee Brice concert during tournament week.

People

Northwestern's **Ryan Lumsden** scored 8-under-par 208 to beat Arizona State's **Alex del Ray** by a stroke for the Marquette Intercollegiate title at Erin Hills Sept. 30-Oct. 2, and lead the Wildcats to the team title. ... **Matthew Wolfe** of Oklahoma State won the Fighting Illini at Olympia Fields at 6-under 204, leading the Cowboys to the title.

ILLINOIS GOLFER SCHEDULE

The National Scene

Key national and international championships,
WGA, WWGA, USGA, plus tour stops in Illinois and vicinity
September

- 5- 8 October
- 4- 7 3rd International Crown, Incheon, South Korea
- 6-11 U.S. Senior Women's Amateur, Orchid Island G&Beach C, Vero Beach, Fla.
- 15-17 2nd Senior LPGA Championship, French Lick Resort / Dye, French Lick, Ind.

USGA Qualifying

www.usga.org; generally conducted locally by CDGA
October

- 11 2019 U.S. Amateur Four-Ball Qualifying, Flossmoor CC, Flossmoor

Illinois PGA

www.ipga.com • Key tournaments
October

- 3- 4 Illinois PGA Players Championship, Eagle Ridge (North), Galena
- 11 Salesman-Pro Invitational, Kemper Lakes GC, Kildeer
- 18-19 Senior Players Championship, Old Elm C, Highland Park

Chicago District GA

www.cdga.org
October

- 1- 4 3rd CDGA Senior Amateur Four-Ball, Indian Hill C, Winnetka

Mid-America Junior Golf Tour

www.ijga.org/majgt • Illinois tournaments
October

- 21-22 Autumn Open, Twin Orchard CC / White, Long Grove

Notable Junior Tournaments

October

- 15-16 IHSA Championships:
 - A Girls, Red Tail Run GC, Decatur
 - AA Girls, Hickory Point GC, Decatur
 - 1A Boys, Prairie Vista GC, Bloomington
 - 2A Boys, Weibring GC at Illinois State, Normal
 - 3A Boys, The Den at Fox Creek, Bloomington

SCOREBOARD



BMW Championship

Aronimink GC • Newtown Square, Pa. • Par 72 • September 6-10

1	Keegan Bradley	66-64-66-64-260	-20	\$ 1,620,000.00
2	Justin Rose	66-63-64-67-260	-20	\$ 972,000.00
3	Billy Horschel	64-67-66-64-261	-19	\$ 522,000.00
	Xander Schauffele	63-64-67-67-261	-19	\$ 522,000.00
5	Rory McIlroy	62-69-63-68-262	-18	\$ 360,000.00
6	Webb Simpson	66-67-65-65-263	-17	\$ 312,750.00
	Tiger Woods	62-70-66-65-263	-17	\$ 312,750.00
8	Tony Finau	68-64-67-65-264	-16	\$ 252,000.00
	Francesco Molinari	70-63-64-67-264	-16	\$ 252,000.00
	Tommy Fleetwood	71-62-62-69-264	-16	\$ 252,000.00
	Rickie Fowler	65-65-65-69-264	-16	\$ 252,000.00
12	Kevin Na	70-62-67-66-265	-15	\$ 189,000.00
	Gary Woodland	66-66-66-67-265	-15	\$ 189,000.00
	Justin Thomas	64-67-66-68-265	-15	\$ 189,000.00
15	Hideki Matsuyama	66-64-67-69-266	-14	\$ 162,000.00
16	Bubba Watson	71-65-65-66-267	-13	\$ 144,000.00
	Aaron Wise	65-67-68-67-267	-13	\$ 144,000.00
	Andrew Putnam	67-66-66-68-267	-13	\$ 144,000.00
19	Adam Hadwin	69-69-63-67-268	-12	\$ 109,080.00
	Brooks Koepka	69-68-65-66-268	-12	\$ 109,080.00
	Jason Kokrak	69-65-67-67-268	-12	\$ 109,080.00
	Bryson DeChambeau	67-70-64-67-268	-12	\$ 109,080.00
	Patrick Reed	69-65-64-70-268	-12	\$ 109,080.00
24	Dustin Johnson	70-68-64-67-269	-11	\$ 74,700.00
	Charles Howell III	68-63-70-68-269	-11	\$ 74,700.00
	Alex Noren	64-66-70-69-269	-11	\$ 74,700.00
	Jason Day	67-64-68-70-269	-11	\$ 74,700.00
	Jon Rahm	66-69-65-69-269	-11	\$ 74,700.00
29	Henrik Stenson	66-69-67-68-270	-10	\$ 59,850.00
	Austin Cook	71-67-63-69-270	-10	\$ 59,850.00
	Byeong Hun An	65-67-68-70-270	-10	\$ 59,850.00
	Tyrrell Hatton	69-68-69-64-270	-10	\$ 59,850.00
33	Beau Hossler	67-67-68-69-271	-9	\$ 51,975.00
	Zach Johnson	68-68-68-67-271	-9	\$ 51,975.00
35	Brice Garnett	70-67-67-68-272	-8	\$ 46,350.00
	Andrew Landry	68-70-66-68-272	-8	\$ 46,350.00
	Ted Potter Jr.	68-64-67-73-272	-8	\$ 46,350.00

38	Peter Uihlein	64-70-71-68-273	-7	\$ 40,500.00
	C.T. Pan	67-67-71-68-273	-7	\$ 40,500.00
	Chez Reavie	68-70-67-68-273	-7	\$ 40,500.00
41	Si Woo Kim	71-68-66-69-274	-6	\$ 34,200.00
	Chris Kirk	69-68-69-68-274	-6	\$ 34,200.00
	Marc Leishman	74-66-66-68-274	-6	\$ 34,200.00
	Rafa Cabrera Bello	70-68-70-66-274	-6	\$ 34,200.00
45	Kyle Stanley	67-70-65-73-275	-5	\$ 25,740.00
	Luke List	70-66-67-72-275	-5	\$ 25,740.00
	J.J. Spaun	67-68-69-71-275	-5	\$ 25,740.00
	Keith Mitchell	67-67-67-74-275	-5	\$ 25,740.00
	Brian Gay	66-71-69-69-275	-5	\$ 25,740.00
	Scott Piercy	70-64-65-76-275	-5	\$ 25,740.00
51	Abraham Ancer	69-68-68-71-276	-4	\$ 21,465.00
	Ian Poulter	68-70-67-71-276	-4	\$ 21,465.00
	Ryan Armour	65-67-68-76-276	-4	\$ 21,465.00
	Adam Scott	74-68-66-68-276	-4	\$ 21,465.00
55	Jordan Spieth	67-71-66-73-277	-3	\$ 20,520.00
	Patrick Cantlay	71-65-70-71-277	-3	\$ 20,520.00
	Pat Perez	69-70-68-70-277	-3	\$ 20,520.00
58	Kevin Kisner	72-67-69-70-278	-2	\$ 19,980.00
	Louis Oosthuizen	73-68-68-69-278	-2	\$ 19,980.00
	Phil Mickelson	73-72-67-66-278	-2	\$ 19,980.00
61	Patton Kizzire	68-71-67-73-279	-1	\$ 19,440.00
	Emiliano Grillo	67-70-71-71-279	-1	\$ 19,440.00
	Chesson Hadley	69-69-71-70-279	-1	\$ 19,440.00
64	Brendan Steele	74-69-69-68-280	E	\$ 19,080.00
65	Ryan Palmer	70-69-70-73-282	+2	\$ 18,810.00
	Cameron Smith	71-71-68-72-282	+2	\$ 18,810.00
67	Brandt Snedeker	71-69-71-72-283	+3	\$ 18,540.00
68	Brian Harman	69-72-76-75-292	+12	\$ 18,360.00
	WD Paul Casey	69-69-69	-206	-4

Illinois Players Championship

Eagle Ridge Resort / North • Galena • 6,606 yards • Par 72
September 24-25

1	Jeff Kellen, Mauh-Nah-Tee-See	68-68-136	-8	\$ 2,767.00
2	Travis Johns, Medinah CC	70-68-138	-6	\$ 1,977.00
3	Kyle English, Crestwicke CC	68-72-140	-4	\$ 1,410.33
	Steve Orrick, CC of Decatur	71-69-140	-4	\$ 1,410.33
	Andy Mickelson, Mistwood GC	72-68-140	-4	\$ 1,410.33
6	Garrett Chaussard, Skokie CC	69-72-141	-3	\$ 1,127.00
T7	Adam Schumacher, Indian Hill C	71-71-142	-2	\$ 942.33
	Chris Ioriatti, Mistwood GC	72-70-142	-2	\$ 942.33
	Doug Bauman, Biltmore CC	74-68-142	-2	\$ 942.33
T10	Roy Biancalana, St. Andrews	67-76-143	-1	\$ 781.00
	Brian Carroll, Royal Hawk CC	75-68-143	-1	\$ 781.00
T12	Matt Slowinski, Hinsdale GC	68-77-145	+1	\$ 672.33
	Rich Dukelow, Medinah CC	72-73-145	+1	\$ 672.33
	Eric Ilic, Merit C	73-72-145	+1	\$ 672.33

Follow Illinois Golfer on Twitter: @illinoisgolfer

THE DIRECTORY

GREATER CHICAGO COOK COUNTY / NORTH

Anetsberger 1750 Techny Ct., Northbrook • (847) 291-2971 • www.sportsmansgolf.com	9: 27 / 1,128 / unrated Michael Wenzel
Arlington Lakes 1211 S. New Wilke Rd., Arlington Heights • (847) 577-3030 • www.ahpd.org/programs/golf	18: 68 / 5,336 / 65.8 / 115 Tim Govern (GM)
Bartlett Hills 800 W. Oneida, Bartlett • (630) 837-2741 • www.bartletthills.com	18: 71 / 6,463 / 71.7 / 130 Phil Lenz
Billy Caldwell 6150 N. Caldwell Ave., Chicago • (773) 792-1930 • www.forestpreservegolf.com	9: 35 / 3,108 / 69.6 / 115
Bridges of Poplar Creek 1400 Poplar Creek Dr., Hoffman Estates • (847) 884-0219 • www.poplarcreekcc.com	18: 70 / 6,500 / 71.2 / 136 Brian Bechtold
Canal Shores (Peter Jans) 1031 Central St., Evanston • (847) 475-9173 • www.canalshores.org	18: 60 / 3,904 / 57.9 / 86 Tony Frandria (Spt.)
Chick Evans 6145 Golf Rd., Morton Grove • (847) 965-5353 • www.forestpreservegolf.com	18: 71 / 5,626 / 67.2 / 122 Grit Suyasri
Edgebrook 6100 N. Central Ave., Chicago • (773) 763-8320 • www.forestpreservegolf.com	18: 66 / 4,567 / 61.2 / 88 Jim Tourloukis (GM)
Fox Run 333 Plum Grove Rd., Elk Grove Village • (847) 228-3544 • www.foxrungolfinks.com	18: 70 / 6,287 / 70.1 / 119 Thomas Klaas (GM)
The Glen Club 2901 W. Lake Ave., Glenview • (847) 724-7272 • www.theglenclub.com	18: 72 / 7,149 / 74.8 / 140 Alex Prior
Glencoe 621 Westley Rd., Glencoe • (847) 835-0250 • www.glencoeclub.com	18: 72 / 6,527 / 71.6 / 130 Matt Radde
Glenview Prairie 2800 W. Lake Ave., Glenview • (847) 657-1637 • www.golfglenview.com	9: 31 / 1,955 / 29.7 / 94 Kristen Kechik (GM)
Glenview Park 800 Shermer Rd., Glenview • (847) 724-0250 • www.golfglenview.com	18: 70 / 6,109 / 68.9 / 123 Michael Stone
Golf Center Des Plaines 353 River Rd., Des Plaines • (847) 803-4653 • www.dpparks.org/golfcenter	9: 27 / 1,050 / 70.0 / 113
Grayslake 2150 Drury Ln., Grayslake • (847) 548-4713 • www.glpd.com	9: 27 / 1,137 / unrated Mike Perez (GM)
Highland Woods 2775 Ela Rd., Hoffman Estates • (847) 359-5850 • www.forestpreservegolf.com	18: 72 / 6,934 / 72.5 / 124 Joe Bidro (GM)
Hilldale 1625 Ardwick Dr., Hoffman Estates • (847) 310-1100 • www.hilldalegolf.com	18: 71 / 6,432 / 71.6 / 135
Indian Boundary 8600 W. Forest Preserve Ave., Chicago • (773) 625-9630 • www.forestpreservegolf.com	18: 72 / 6,068 / 69.0 / 116
Lake Park 1015 Howard St., Des Plaines • (847) 391-5730 • www.dpparks.org	9: 27 / 1,515 / unrated

ABOUT THE DIRECTORY

This is the most complete public course directory to be found in any golf publication in Illinois. Included are all public courses known to be open in Illinois, practice ranges in the nine-county Chicago area, plus selected courses elsewhere in Indiana, Wisconsin and Michigan. Illinois listings outside Chicago area are by zone, with county also listed for reference. Course detail (yardage, rating, slope from back tees) supplied by courses and the CDGA. Head pro or GM listed if known. Please e-mail changes to illinoisgolfer@earthlink.net. **Expanded listings** are available; please e-mail or call (708) 638-1164.

Makray Memorial 1010 S. Northwest Hwy., Barrington • (847) 381-6500 • www.makraygolf.com	18: 72 / 7,015 / 74.1 / 132 Don Habjan
Marovitz (Waveland) 3600 N. Recreation Dr. (at Addison), Chicago • (312) 742-7930 • www.cpdgolf.com	9: 36 / 3,265 / 35.2 / 124 Mark McCord (GM)
Mount Prospect 600 S. See Gwun Ave. (at Shabonee), Mount Prospect • (847) 259-4200 • www.mppd.org/golf.php	18: 71 / 6,305 / 71.3 / 135 Brett Barcel
Nickol Knoll 3800 N. Kennebec Ave., Arlington Heights • (847) 590-6050 • www.ahpd.org/programs/golf/nickol	9: 27 / 1,163 / unrated Tim Govern (GM)
Old Orchard 700 W. Rand Rd., Mount Prospect • (847) 255-2025 • www.oldorchardcc.com	18: 70 / 6,119 / 70.1 / 130 Doug Brezeau
Palatine Hills 512 W. Northwest Hwy., Palatine • (847) 359-4020 • www.palatinehills.org	18: 72 / 6,800 / 72.5 / 127 Dan Hotchkin
Rob Roy 505 E. Camp McDonald Rd., Prospect Heights • (847) 253-4544 • www.robroygc.com	9: 36 / 3,022 / 37.8 / 119
Robert A. Black 2045 W. Pratt Blvd., Chicago • (312) 742-7931 • www.cpdgolf.com	9: 33 / 2,361 / 31.7 / 100 Jerry Losos
Schaumburg Tournament • Baer 18: 71 / 6,644 / 71.7 / 130 Players 9: 35 / 3,189 / 34.7 / 124	18: 70 / 6,644 / 71.7 / 130 Preston "Pepe" Irwin
Sportsman's 3535 Dundee Rd., Northbrook • (847) 291-2351 • www.sportsmansgolf.com	Classic 18: 70 / 6,278 / 70.4 / 126 East 9: 35 / 3,010 / 34.6 / 118 Greg Baron
Tam O'Shanter 6700 W. Howard St., Niles • (847) 965-2344 • www.niles-parks.org	9: 33 / 2,457 / 63.2 / 110 Chris Urgo

Traditions at Chevy Chase 1000 N. Milwaukee Ave., Wheeling • (847) 465-2300 • www.chevychasecountryclub.com	18: 72 / 6,610 / 71.9 / 128 Margie Arnold (GM)
Twin Lakes 1200 E. Lake Dr., Palatine • (847) 934-6050 • saltcreek.multisportssystem.com	9: 29 / 1,460 / 35.0 / 113
Villa Olivia Rt. 20 & Naperville Rd., Bartlett • (630) 289-1000 • www.villaolivia.com/golfinfo	18: 72 / 6,510 / 72.4 / 124
Walnut Greens 1150 N. Walnut Ln., Schaumburg • (847) 490-7878 • www.walnutgreengolf.com	9: 27 / 1,078 / unrated
Weber Park 9300 Weber Park Pl., Skokie • (847) 674-1400 x3600 • www.skokieparkdistrict.org	9: 27 / 1,095 / 35.5 / 113
Willow Hill 1350 Willow Rd., Northbrook • (847) 480-7888 • www.willowhillgolfcourse.com	9: 35 / 2,895 / 34.2 / 118 Adam Kwiatkoski
Wilmette 3900 Fairway Dr., Wilmette • (847) 256-9777 • www.golfwilmette.com	18: 70 / 6,400 / 70.9 / 130 Jamie Locke
Winnetka 1300 Oak St., Winnetka • (847) 501-2050 • www.winpark.org/golf-club	18: 71 / 6,517 / 72.6 / 130 9: 27 / 1,194 / unrated Cortney Miller

COOK COUNTY / SOUTH

Cog Hill 12294 Archer Ave., Palos Park • (630) 257-5872 • www.coghilgolf.com	No. 1 / Blue 18: 70 / 6,282 / 69.7 / 118 No. 2 / Ravines 18: 72 / 6,639 / 71.8 / 124 No. 3 / Red 18: 72 / 6,402 / 69.7 / 116 No. 4 / Dubsread 18: 72 / 7,616 / 77.8 / 151
Coyote Run 800 Kedzie Ave., Flossmoor • (708) 957-8700 • www.coyoterungolf.com	18: 71 / 6,478 / 69.5 / 123 Practice 3: 9 / 373 / unrated Brian Smith
Dunne National 16310 S. Central Ave., Oak Forest • (708) 429-6886 • www.forestpreservegolf.com	18: 72 / 7,262 / 75.4 / 142
Flagg Creek 6939 S. Wolf Rd., Countryside • (708) 246-3336 • www.flaggcreekgolfcourse.com	9: 33 / 2,493 / 31.9 / 104 Billy Rosinia
Fountain Hills 12601 S. Kedzie Ave., Alsip • (708) 388-4653 • www.fountainhillsgc.com	9: 36 / 3,233 / 35.1 / 112 Rich Gottardo (GM)
Fresh Meadow 2144 S. Wolf Rd., Hillside • (708) 449-0000 • www.freshmeadowgc.com	18: 70 / 6,283 / 70.1 / 116 Michael Huber
Gleneagles 13070 McCarthy Rd., Palos Park • (630) 257-5466 • www.golfgleneagles.com	Red / Lakes 18: 70 / 6,029 / 68.0 / 116 White / Woodland 18: 70 / 6,302 / 70.1 / 124 Gregg Miller
Glenwoodie 19301 S. State St., Glenwood • (708) 758-1212 • www.glenwoodiegolf.com	18: 72 / 6,902 / 71.6 / 125 Phil Robbins
Harborside International 11001 S. Doty Ave. East, Chicago • (312) 782-7837 • www.harborsideinternational.com	Port 18: 72 / 7,164 / 74.8 / 136 Starboard 18: 72 / 7,166 / 74.7 / 135 Joel Voss

Hickory Hills 18: 71 / 6,018 / 67.9 / 116
9: 30 / 1,560 / unrated
8201 W. 95th St., Hickory Hills • (708) 598-5900 • www.hickoryhillsgolfclub.com

Jackson Park 18: 70 / 5,444 / 65.7 / 109
6401 W. Richard Dr., Chicago • (773) 667-0524 • www.cdpgolf.com Tyrone Banks (GM)

Joe Louis The Champ 18: 72 / 6,742 / 71.4 / 124
13100 S. Halsted St., Riverdale • (708) 849-1731 • www.forestpreservgolf.com Bryan Carroll

Marquette Park 9: 36 / 3,245 / 35.5 / 119
6700 S. Kedzie Ave., Chicago • (312) 747-2761 • www.cdpgolf.com Steve McDaniels (GM)

Meadowlark 9: 36 / 3,404 / 35.9 / 114
11599 W. 31st St., Oak Brook • (708) 562-2977 • www.forestpreservgolf.com

Meadows of Blue Island 18: 71 / 6,581 / 71.3 / 121
2802 W. 123rd St., Blue Island • (708) 385-1994 • www.meadowsgc.com Jerry Vidovic

Oak Hills 9: 34 / 2,520 / 33.0 / 109
13200 S. 76th Ave., Palos Heights • (708) 448-5544 • www.oakhills.com Allan Parkes

Odyssey 18: 72 / 7,095 / 73.1 / 131
19110 S. Ridgeland Ave., Tinley Park • (708) 429-7400 • www.odysseycountryclub.com Ed Staffan

Palos Southmoor 9: 35 / 3,154 / 70.4 / 128
13100 Southwest Hwy., Orland Park • (708) 448-6550 • www.paloscountryclub.com

Palos Hills 9: 35 / 2,838 / 67.4 / 119
7301 W. 105th St., Palos Hills • (708) 599-0202 • www.paloshillsweb.org/golf Gwen Leddy (GM)

Ravisloe 18: 70 / 6,321 / 70.8 / 127
18231 S. Park Ave., Homewood • (708) 798-5600 • www.ravisloecountryclub.com

River Oaks 18: 72 / 5,952 / 69.3 / 119
1 Park Ave., Calumet City • (708) 868-4090 • www.forestpreservgolf.com

Ruffled Feathers 18: 72 / 6,898 / 73.7 / 140
1 Pete Dye Dr., Lemont • (630) 257-1000 • www.ruffledfeathersgsc.com Gordon Acton

Silver Lake North 18: 72 / 6,826 / 72.6 / 124
South 18: 70 / 6,337 / 70.2 / 124
Rolling Hills 9: 29 / 1,587 / 27.1 / unsloped
14700 S. 82nd Ave., Orland Park • (708) 349-6940 • www.silverlakecc.com Gregg Tengerstrom

South Shore 9: 33 / 2,713 / 32.9 / 112
7059 S. South Shore Dr., Chicago • (312) 955-1892 • www.cpdgolf.com Adrienne Carney (GM)

Stony Creek 18: 65 / 5,004 / 62.5 / 103
5850 W. 103rd St., Oak Lawn • (708) 857-2433 • www.golfstonycreek.com

Water's Edge 18: 72 / 6,904 / 72.9 / 131
7205 W. 115th St., Worth • (708) 671-1032 • www.watersedgegolf.com Jim Torloukis (GM)

White Mountain 9: 29 / 1,741 / 27.1 / unsloped
9901 W. 179th St., Orland Park • (708) 478-4653 • www.whitemountaingolfpark.com Mike Camerano

LAKE COUNTY / ILLINOIS

Antioch 18: 71 / 6,183 / 70.2 / 130
40150 N. Rt. 59, Antioch • (847) 395-3004 • www.antiochgolfclub.com Vince Juarez

Arboretum 18: 72 / 6,447 / 71.6 / 137
401 Half Day Rd., Buffalo Grove • (847) 913-1112 • www.arboretumgolf.com Carmen Molinaro

Barrington Park District 5: 15 / 675 / unrated
235 Lions Dr., Barrington • (847) 381-0687 • www.barringtonparkdistrict.com

Bittersweet 18: 72 / 6,754 / 72.8 / 130
875 Almond Rd., Gurnee • (847) 855-9031 • www.bittersweetgolf.com Sean Joyce

Bonnie Brook 18: 72 / 6,701 / 72.3 / 128
2800 N. Lewis Ave., Waukegan • (847) 360-4730 • www.waukegangolf.org Tony Tinetti

Brae Loch 18: 70 / 5,876 / 67.5 / 114
33600 N. Hwy. 45, Grayslake • (847) 968-3444 • www.lcfdp.org/brae_loch Bill Ebdon

Buffalo Grove 18: 72 / 6,693 / 72.1 / 127
48 Raupp Blvd., Buffalo Grove • (847) 459-5520 • www.buffalogrovegolf.com Joe Bridges

Countryside Traditional 18: 72 / 6,397 / 70.3 / 118
Prairie 18: 72 / 6,757 / 71.4 / 121
20800 W. Hawley St., Mundelein • (847) 968-3466 • www.lcfdp.org/countryside

Crane's Landing Marriott 18: 70 / 6,290 / 71.1 / 130
10 Marriott Dr., Lincolnshire • (847) 634-5935 • www.craneslandinggolf.com Tim Pagel

Deerfield 18: 72 / 6,816 / 72.4 / 131
1201 Saunders Dr., Riverwoods • (847) 945-8333 • www.deerfieldgolf.org Jason Minnina

Deerpath 18: 70 / 6,255 / 70.6 / 130
500 W. Deerpath Rd., Lake Forest • (847) 615-4290 • www.deerpathgolf.com Rick Walrath (GM)

Foss Park 18: 72 / 6,839 / 71.9 / 113
3124 Argonne Dr., North Chicago • (847) 689-7490 • www.fossparkgolf.org Gabe Monroe

Fox Lake 18: 72 / 6,359 / 71.3 / 126
7220 State Park Rd., Fox Lake • (847) 587-6411 • www.foxlakecc.net Vince Juarez (GM)

Greenshire 9: 27 / 1,265 / unrated
38727 N. Lewis Ave., Beach Park • (847) 360-4777 • www.waukegangolf.org

Heather Ridge 9: 35 / 3,007 / 35.1 / 117
5900 HeatherRidge Dr., Gurnee • (847) 367-6010 • www.heatheridgegolf.com Dirk Skelley

Hickory Knoll 9: 30 / 1,780 / 35.5 / 113
24745 W. Monaville Rd., Lake Villa • (847) 356-8640 • www.golfhickoryknoll.com

Lake Bluff 18: 72 / 6,589 / 71.3 / 124
355 W. Washington St., Lake Bluff • (847) 234-6771 • www.lakebluffgolfclub.com Ed Heiser

Lakemoor 18: 72 / 6,334 / 70.5 / 124
29000 W. Sullivan Lake Rd., Lakemoor • (815) 759-0011 • no website

Libertyville 9: 27 / 1,205 / 35.0 / 113
870 Country Club Dr., Libertyville • (847) 362-5733 • www.libertyville.com Connie Kowal (GM)

Midlane 18: 71 / 6,681 / 73.1 / 131
4555 W. Yorkhouse Rd., Wadsworth • (847) 623-4653 • www.midlaneresort.com Michael Chappell

Pine Meadow 18: 72 / 7,297 / 74.8 / 138
1 Pine Meadow Ln., Mundelein • (847) 566-4653 • www.pinemeadowgsc.com Dennis Johnsen

Renwood 18: 72 / 6,062 / 69.0 / 124
701 E. Shorewood Rd., Round Lake Beach • (847) 231-4711 • www.renwoodgolf.com Brad Rouse

Shepherd's Crook 18: 71 / 6,769 / 72.1 / 128
351 N. Greenbay Rd., Zion • (847) 872-2080 • www.shepherdsCrook.org Larry Myers (GM)

Shiloh 9: 35 / 2,900 / 67.2 / 118
23rd St. and Bethesda Rd., Zion • (847) 746-5500, x420 • www.shilohparkgolf.com

Steeple Chase 18: 72 / 6,827 / 73.1 / 139
200 N. La Vista Dr., Mundelein • (847) 949-8900 • www.mundeleinparks.org/steeplechase.html Bill Brolley

Stonewall Orchard 18: 72 / 7,124 / 74.7 / 148
25675 W. Hwy. 60, Grayslake • (847) 740-4890 • www.stonewallorchard.com Jeff Pajula

Sunset Valley 18: 72 / 6,484 / 71.8 / 131
1390 Sunset Rd., Highland Park • (847) 432-7140 • www.sunsetvalleygolfcourse.org Rob Saunders (GM)

ThunderHawk 18: 72 / 7,031 / 73.8 / 136
39700 N. Lewis Ave., Beach Park • (847) 872-4295 • www.lcfdp.org Bill Ebdon

Vernon Hills 9: 34 / 2,836 / 34.2 / 120
291 Evergreen Dr., Vernon Hills • (847) 680-9310 • www.vernonhillsgolf.com O.B. Sanders (GM)

Village Green 18: 70 / 6,018 / 68.6 / 117
2501 N. Midlothian, Mundelein • (847) 566-7373 • www.villagegreenc.com Tim Miles Jr. (GM)

White Deer Run 18: 72 / 7,101 / 74.5 / 142
250 W. Gregg's Pkwy., Vernon Hills • (847) 680-6100 • www.whitedeergolf.com Bob Malpede

Willow Glen 18: 71 / 6,637 / 72.1 / 125
2821 Great Lakes Dr., Great Lakes • (847) 688-4593 • www.mwrgl.com/recreation/golf/golf.htm Dan Kraft (GM)

DUPAGE COUNTY

Apple Orchard 9: 27 / 1,275 / unrated
692 W. Stearns Rd., Bartlett • (630) 540-4807 • www.bartlettparks.org/Golf/general Tony Nuzzo

Arrowhead South-East 18: 72 / 6,738 / 72.5 / 132
combinations vary West 9: 36 / 3,295 / 35.9 / 130
26W151 Butterfield Rd., Wheaton • (630) 653-5800 • www.arrowheadgolfclub.org Bruce Stoller (GM)

Bloomington 18: 71 / 6,251 / 70.2 / 123
181 Glen Elyn Rd., Bloomington • (630) 529-6232 • www.bloomingtondalegc.com Dave Shallcross

Cantigny Woodside 9: 36 / 3,587 / 37.6 / 143
18-hole Lakeside 9: 36 / 3,437 / 36.6 / 136
combinations vary Hillside 9: 36 / 3,394 / 36.2 / 135
Youth Short 9: 27* / 954 / unrated
27W270 Mack Rd., Wheaton • (630) 668-8463 • www.cantignygolf.com Patrick Lynch

Carriage Greens 18: 70 / 6,395 / 71.4 / 126
8700 Carriage Greens Dr., Darien • (630) 985-3400 • www.carriagegreens.com James Sims (GM)

Country Lakes 18: 73 / 6,656 / 71.9 / 121
1601 Fairway Dr., Naperville • (630) 420-1060 • website inactive Mike Jablecki

Eaglewood Resort 18: 72 / 6,017 / 68.2 / 120
1401 Nordic Rd., Itasca • (630) 773-1400 • www.eaglewoodresort.com Andy Carr

Downers Grove 9: 36 / 3,233 / 72.6 / 131
2420 Haddow Dr., Downers Grove • (630) 963-1306 • www.dgparks.org

Glendale Lakes 18: 71 / 6,190 / 69.8 / 125
1550 President St., Glendale Heights • (630) 260-0018 • www.glendalelakes.com Jennifer Ferrell

Green Meadows 9: 30 / 1,888 / unrated
18W201 W. 63rd St., Westmont • (630) 810-5330 • www.dupagegolf.com Dean Westrom

Klein Creek 18: 72 / 6,701 / 72.6 / 137
1N333 Pleasant Hill Rd., Winfield • (630) 690-0101 • www.kleincreek.com Matte Allman

When you check in to play, tell them you saw the listing in Illinois Golfer.

Links & Tees 9: 27 / 1,161 / unrated
900 W. Lake St., Addison • (630) 458-2660 • www.addisonparks.org/links_and_tees

Maple Meadows 18: 70 / 6,438 / 71.0 / 126
East 9: 34 / 2,815 / 33.7 / 121
272 S. Addison Rd., Wood Dale • (630) 616-8424 • www.dupage.golf Chris Malek (GM)

Oak Brook 18: 72 / 6,541 / 71.1 / 126
2606 York Rd., Oak Brook • (630) 990-3032 • www.oak-brook.org Trey Van Dyke

Pheasant Run Resort 18: 72 / 6,424 / 70.6 / 122
4051 E. Main St., St. Charles • (630) 584-4914 • www.pheasantrun.com Robert Jan

Prairie Landing 18: 72 / 6,950 / 73.8 / 139
2325 Longest Dr., West Chicago • (630) 208-7600 • www.prairielanding.com Brian King

Preserve at Oak Meadows 18: 72 / 7,015 / TBA / TBA
900 N. Wood Dale Rd., Addison • (630) 595-0071 • www.dupagegolf.com Austin Kopp

River Bend 9: 36 / 3,300 / 70.8 / 126
5900 S. Rt. 53, Lisle • (630) 968-1920 • www.riverbendgolfclub.org Debbie Culbertson

St. Andrews St. Andrews 18: 71 / 6,920 / 71.8 / 124
Joe Jemsek 18: 72 / 6,770 / 72.0 / 120
3 N. 441 Rt. 59, West Chicago • (630) 231-3100 • www.standrewsgc.com Dave Erickson

Salt Creek 18: 63 / 3,946 / unrated
701 W. Thorndale Ave., Wood Dale • (630) 773-0184 • www.saltcreekgolfclub.com Tony Perry

Seven Bridges 18: 72 / 7,111 / 74.6 / 144
1 Mulligan Dr., Woodridge • (630) 964-7777 • www.sevenbridgesgolfclub.com Ben Nachtwey

Springbrook 18: 72 / 6,896 / 73.0 / 130
2220 W. 83rd St., Naperville • (630) 848-5060 • www.springbrookgolfcourse.org Mike Lzyun

Streamwood Oaks 9: 36 / 3,404 / 72.9 / 125
565 Madison Dr., Streamwood • (630) 483-1881 • www.streamwood.org

Sugar Creek 9: 32 / 2,344 / 62.0 / 106
500 E. Van Buren, Villa Park • (630) 834-3325 • www.sugarcreekgolfcourse.org Cory Ferrell

Twin Lakes 9: 28 / 1,381 / unrated
400 W. 59th St., Westmont • (630) 852-7167 • www.wpd4fun.com Ashley Medley (GM)

Village Greens of Woodridge
18: 72 / 6,638 / 71.2 / 121
1575 W. 75th St., Woodridge • (630) 985-3610 • www.villagegreensgolf.com Brandon Evans

Village Links of Glen Ellyn 18: 72 / 7,208 / 74.9 / 138
9: 36 / 3,303 / 35.7 / 129
485 Winchell Way, Glen Ellyn • (630) 469-8180 • www.villagelinksgolf.com Noel Allen

Western Acres 9: 35 / 3,052 / 69.2 / 111
2400 W. Butterfield Rd., Lombard • (630) 469-6768 • www.westernacres.com Don Voth

White Pines East 18: 70 / 6,371 / 71.1 / 127
West 18: 72 / 6,624 / 71.5 / 127
500 W. Jefferson St., Bensenville • (630) 766-0304 • www.whitepinesgolf.com Mike Huber (GM)

Willow Crest 18: 70 / 6,474 / 71.1 / 132
3500 Midwest Rd., Westmont • (630) 850-5515 • www.oakbrookhillsresortchicago.com/golf/golf.htm

Zigfield Troy 9: 27 / 1,089 / unrated
1535 75th St., Woodridge • (630) 985-4653 • www.zigfieldtroygolf.com Tim Troy, Dennis Troy

WILL COUNTY

Balmoral Woods 18: 72 / 6,625 / 72.4 / 131
26732 S. Balmoral Woods Dr., Crete • (708) 672-7448 • www.balmoralwoods.com Bill Abrams

Big Run 18: 72 / 7,028 / 74.4 / 138
17211 W. 135th St., Lockport • (815) 838-1057 • www.bigrungolf.com Bill Roper

Bolingbrook 18: 72 / 7,104 / 73.8 / 135
2001 Rodeo Dr., Bolingbrook • (630) 771-9400 • www.bolingbrookgolfclub.com Eric Aldrich

Boughton Ridge 9: 32 / 2,205 / 30.1 / 105
335 E. Boughton Dr., Bolingbrook • (630) 739-4100 • www.bolingbrookparks.org

Braidwood Fairways 9: 36 / 2,914 / unrated
35494 Essex Rd. south of Smiley Rd., Wilmington • (815) 458-2965 • no website

Broken Arrow East / North 18: 72 / 7,034 / 74.5 / 130
South 9: 36 / 3,469 / 37.0 / 140
16325 W. Broken Arrow Dr., Lockport • (815) 836-8858 • www.golfbrokenarrow.com Michael Chen (GM)

Cinder Ridge 18: 72 / 6,968 / 73.1 / 139
24801 Lakepoint Dr., Wilmington • (815) 476-4000 • www.cinderridge.com Sue Krueger (GM)

Deer Creek 18: 72 / 6,905 / 73.2 / 129
25055 S. Western Ave., University Park • (708) 672-6667 • www.deercreekgolfcourse.com

Golf Vista Estates 9: 29 / 1,505 / unrated
4951 Augusta Blvd., Monee • (708) 534-8204 • www.golfvistagolfclub.com

Green Garden Blue 18: 72 / 6,670 / 71.7 / 120
Gold 18: 72 / 6,713 / 71.8 / 126
Emerald 9: / 3,181 / 70.8 / 122
9511 W. Manhattan-Monee Rd., Frankfort • (815) 469-3350 • www.greengardencc.com

Heritage Bluffs 18: 72 / 7,171 / 74.1 / 138
24355 W. Bluff Rd., Channahon • (815) 467-7888 • www.heritagebluffs.com Brian Smith

Inwood 18: 71 / 6,196 / 70.1 / 131
3200 W. Jefferson St., Joliet • (815) 741-7265 • www.jolietinwoodgc.com Brian Legan

Lincoln Oaks 18: 71 / 6,186 / 69.0 / 120
395 E. Richton Rd., Crete • (708) 672-9401 • www.lincolnoaksgolfcourse.com Bob Seymour (GM)

Links at Carillon Blue / Red 18: 71 / 6,844 / 70.9 / 124
White 9: 36 / 3,438 / 36.0 / 61
21200 S. Carillon Dr., Plainfield • (815) 886-2132 • www.carillongolf.com Jeff Yackley

Longwood 18: 70 / 6,404 / 70.7 / 130
3503 E. Steger Rd., Crete • (708) 758-1811 • longwoodcc.com Joe Tintari (GM)

Mistwood 18: 72 / 6,773 / 72.4 / 137
1700 W. Renwick Rd., Romeoville • (815) 254-3333 • www.mistwoodgolf.net Andy Mickelson

Naperbrook 18: 72 / 6,677 / 72.0 / 127
22204 W. 111th St., Plainfield • (630) 378-4215 • www.naperbrookgolfcourse.org Tim Dunn

Old Oak 18: 71 / 6,609 / 71.1 / 128
14200 S. Parker Rd., Homer Glen • (708) 301-3344 • www.oldoakcc.com Dan Shields

Prairie Bluff 18: 72 / 7,007 / 73.2 / 125
19433 Renwick Rd., Lockport • (815) 836-4653 • www.prairiebluffgc.com Steve Lunde

Sanctuary 18: 72 / 6,917 / 72.5 / 131
485 N. Marley Rd., New Lenox • (815) 462-4653 • www.golfsanctuary.com Bob Schulz

Square Links 9: 30 / 1,749 / unrated
7861 W. St. Francis Rd., Frankfort • (815) 469-1600 • www.fspd.org Brian Zipse

Tamarack 18: 70 / 6,901 / 73.7 / 136
24032 Royal Worlington Dr., Naperville • (630) 904-4000 • www.tamarackgc.com Brett Hafstad (GM)

Tuckaway 18: 72 / 6,192 / 69.7 / 117
27641 Stony Island Ave., Crete • (708) 946-2259 • website inactive Jason Poblocki

University Park 18: 71 / 6,701 / 71.4 / 123
23520 Crawford Ave., University Park • (708) 747-0306 • www.universitygolfclub.com Bob Geppert

Wedgewood 18: 72 / 6,836 / 72.5 / 128
5001 Caton Farm Rd., Joliet • (815) 741-7270 • www.jolietwedgewoodgc.com Jason Shook

Willow Run 9: 35 / 2,930 / 33.9 / 113
12600 W. 187th St., Mokena • (815) 485-2119 • www.willowrungolf.net Rich Wisslead (GM)

Woodruff 18: 68 / 5,424 / 66.1 / 114
621 N. Gougar Rd., Joliet • (815) 741-7272 • www.jolietwoodruffgc.com Kirk Blakney (GM)

McHENRY COUNTY

Blackstone 18: 72 / 6,734 / 72.8 / 139
9700 St. Andrews Dr., Marengo • (815) 923-1800 • www.blackstonegc.com Susan Concialdi (GM)

Boone Creek
Prairie/Creekside 18: 71 / 6,435 / 70.4 / 122
Valley 9: 35 / 2,883 / 33.9 / 115
6912 Mason Hill Rd., Bull Valley • (815) 455-6900 • www.boonecreekgolfclub.com Tyler Wollberg

Cary 18: 72 / 6,135 / 69.0 / 119
2400 Grove Ln., Cary • (847) 639-3161 • www.carycountryclub.com Bob Keith

Chalet Hills 18: 73 / 6,877 / 73.6 / 137
943 Rawson Bridge Rd., Cary • (847) 639-0666 • www.chalethillsgolfclub.com Brian Smith

Chapel Hill 18: 70 / 6,133 / 70.1 / 122
2500 N. Chapel Hill Rd., McHenry • (815) 385-3337 • www.chapelhillgolf.com Larry Piet (GM)

Craig Woods 9: 34 / 2,290 / 70.0 / 113
5815 S. Rt. 47, Woodstock • (815) 338-9781 • www.crystalwoodsgc.com

Crystal Woods 18: 72 / 6,427 / 70.6 / 128
5919 S. Rt. 47, Woodstock • (815) 338-3111 • www.crystalwoodsgc.com John Craig

Foxford Hills 18: 72 / 7,047 / 74.2 / 142
6800 S. Rawson Bridge Rd., Cary • (847) 639-0400 • www.foxfordhillsgolfclub.com Rob Sankey

Golf Club of Illinois 18: 71 / 7,011 / 74.4 / 137
1575 Edgewood Rd., Algonquin • (847) 658-4400 • www.golfclubofil.com Robert Lemke (GM)

Hunter 18: 72 / 6,381 / 69.2 / 115
5419 Kenosha St., Richmond • (847) 678-7940 • no website

Marengo Ridge 18: 72 / 6,654 / 72.5 / 129
9106 Harmony Hill Rd., Marengo • (815) 923-2332 • www.marengoridgegolfclub.com Bob Witek (GM)

Oak Grove 18: 71 / 7,021 / 75.0 / 142
16914 Oak Grove Rd., Harvard • (815) 648-2550 • www.oakgrovegolfcourse.com Tim Miles Jr. (GM)

Old Top Farm 9: 37 / 2,881 / 30.0 / 113
2120 Crystal Lake Rd., Crystal Lake • (815) 479-9361 • no website Scott Kerbs

Pinecrest 18: 72 / 6,604 / 71.5 / 123
11220 Algonquin Rd., Huntley • (847) 669-3111 • www.huntleyparks.org/parks-facilities/golf Mike Yackle

Follow Illinois Golfer on Twitter:
[@illinoisgolfer](https://twitter.com/illinoisgolfer)

Pistakee 815 W. Bay Rd., McHenry • (815) 385-9854 • <i>no website</i>	9: 36 / 3,029 / unrated Jason Whitt (GM)
RedTail 7900 Redtail Dr., Lakewood • (815) 477-0055 • www.redtailgolf.com	18: 72 / 6,803 / 72.8 / 130 Chris Neuhart
Waters Edge 4005 N. Rt. 23, Marengo • (815) 568-5983 • <i>no website</i>	18: 33 / 1,700 / unrated Mark Horan
Whisper Creek 12840 Del Webb Blvd., Huntley • (815) 515-7680 • www.whispercreekgolf.com	18: 72 / 7,103 / 73.7 / 133 Christopher Strand

KANE COUNTY

Bliss Creek 1 Golfview Rd., Sugar Grove • (630) 466-4177 • www.blisscreekgolf.com	18: 69 / 5,592 / 67.0 / 115 Gordon Pike (GM)
Bonnie Dundee 270 Kennedy Dr., Carpentersville • (847) 426-5511 • www.bonnieundeeegc.com	18: 69 / 6,015 / 68.1 / 122 Jim Opp
Bowes Creek 1250 Bowes Creek Blvd., Elgin • (847) 214-5880 • www.bowescreekcc.com	18: 71 / 6,917 / 73.2 / 142 Mike Lehman
Deer Valley 46W994 Jericho Rd., Big Rock • (630) 556-3333 • www.deervalleygc.net	9: 29 / 1,358 / unrated
Fox Valley 2500 N. River Rd., North Aurora • (630) 879-1030 • www.aurora-il.org/operations	18: 72 / 5,937 / 68.6 / 126 Jeff Schmidt
Highlands of Elgin 875 Sports Way, Elgin • (847) 931-5950 • www.highlandsofelgin.com	18: 72 / 6,961 / 73.8 / 136 Jim Vogt
Hughes Creek 1749 Spring Valley Dr., Elburn • (630) 365-9200 • www.hughescreek.com	18: 72 / 6,506 / 71.6 / 127 Sam Bradberry
Mill Creek 39W525 Herrington Dr., Geneva • (630) 208-7272 • www.millcreekgolfcourse.com	18: 71 / 6,420 / 71.4 / 135 Craig Kight
Orchard Valley 2411 W. Illinois Ave., Aurora • (630) 907-0500 • www.orchardvalleygolf.com	18: 72 / 6,745 / 72.4 / 134 Jim Tourloukis (GM)
Phillips Park 1001 Hill Ave., Aurora • (630) 256-3760 • www.phillipsparkaurora.com	18: 71 / 6,186 / 69.8 / 121 Jeff Schmidt
Pottawatomie Park 845 N. Second Ave., St. Charles • (630) 584-8356 • www.stcparks.org	9: 35 / 3,007 / 69.8 / 122 James Wheeler
Randall Oaks 4101 Binnie Rd., West Dundee • (847) 428-5661 • www.randalloaksgc.com	18: 71 / 6,598 / 71.7 / 133 3: 9 / 300 apx. Steve Gillie
Settler's Hill 919 E. Fabyan Pkwy., Batavia • (630) 232-1636 • www.settlershill.com	18: 72 / 6,630 / 72.1 / 130 John O'Connor
Tanna Farms 39W808 Hughes Rd., Geneva • (630) 232-4300 • www.tannafarms.com	18: 71 / 6,510 / 72.0 / 131 Chad Zipse
Valley Green 314 Kingswood Dr., North Aurora • (630) 897-3000 • www.valleygreengc.com	18: 60 / 3,841 / 70.0 / 113
Wing Park 1000 Wing St., Elgin • (847) 931-5952 • www.cityofelgin.org	9: 36 / 3,077 / 70.8 / 115 Bill Eubanks
Wolf Run 1700 Jericho Rd., Aurora • (630) 906-1402 • www.wolfrungolfcourse.net	9: 64 / 4,229 / 70.0 / 113 Roger Wolf (GM)

Don't see your favorite public course listed? Call us at (708) 638-1164.

KENDALL COUNTY

Blackberry Oaks 2245 Kennedy Rd., Bristol • (630) 553-7170 • www.blackberryoaks.com	18: 72 / 6,404 / 71.3 / 134
Cedardell 14264 S. Hale St., Plano • (630) 552-3242 • www.cedardellgolfclub.com	9: 35 / 3,029 / 69.4 / 127 Terry Donahue
Fox Bend 3516 U.S. Hwy 34, Oswego • (630) 554-3939 • www.foxbendgolfcourse.com	18: 72 / 6,890 / 73.1 / 130 Brad Doyle (GM)
Whitetail Ridge 7671 Clubhouse Dr., Yorkville • (630) 882-8988 • www.whitetailridge.us	18: 71 / 6,524 / 71.0 / 128 Patrick MacDonald

KANKAKEE COUNTY

Aspen Ridge 1763 E. 4000 N Rd., Bourbonnais • (815) 939-1742 • www.aspenridgegolf.com	18: 70 / 6,191 / 69.6 / 119 Leo Ciaccio (GM)
Cardinal Creek Center / South North	18: 72 / 6,423 / 70.0 / 122 9: 36 / 3,274 / 35.1 / 122 615 S. Dixie Hwy., Beecher • (708) 946-2800 • www.cardinalcreekgolfclub.com
High Point 309 High Point Dr., Essex • (815) 365-4000 • www.golfhighpoint.com	9: 27 / 3,263 / 70.8 / 116 Debra Deegan
Kankakee Elks 2283 Bittersweet Dr., Aroma Park • (815) 937-9547 • www.elksgolf627.com	18: 71 / 6,430 / 71.1 / 120 Kyle Morris
Manteno 7202 N. 4000 E Rd., Manteno • (815) 468-8827 • www.mantenogolf.com	18: 72 / 6,462 / 70.8 / 120 C.J. Wade (GM)
Minne Monesse 15944 E. Six Mile Grove Rd., Grant Park • (815) 465-6653 • www.minnemonesse.com	18: 72 / 6,357 / 70.7 / 126 Debra Hurley
Oak Springs 6740 E. 3500 S Rd., St. Anne • (815) 937-1648 • www.oakspringsgolf.com	18: 72 / 6,260 / 70.0 / 122 Sam Ortman (GM)
Shamrock 6575-B E. Rt. 17, Aroma Park • (815) 937-9355 • www.golfshamrock.com	18: 60 / 3,357 / 65.0 / 107 Gene Smith
South Shore 1727 N. River South Rd., Momence • (815) 472-4407 • <i>website inactive</i>	18: 72 / 6,200 / 68.9 / 122

LAKE COUNTY / INDIANA

Cedar Creek 10483 W. 109th Ave., Cedar Lake • (219) 365-2902 • www.lakecountyparks.com	9: 31 / 1,741 / 66.5 / 104 Tom Zimmerman
Centennial Park 1005 S. Centennial Dr., Munster • (219) 836-6931 • www.munster.org	9: 36 / 3,300 / 72.4 / 132 Matt Meneghetti
Indian Ridge 6363 Grand Blvd., Hobart • (219) 942-6850 • www.hegangolf.com	18: 72 / 6,217 / 69.1 / 110 Chuck Hegan (GM)
Lost Marsh 1001 E. 129th St., Hammond • (219) 932-4046 • www.lostmarshgolf.com	18: 72 / 6,872 / 72.0 / 128 9: 27 / 2,600 / unrated Niko Sullivan
MacArthur 4000 Indianapolis Blvd. (at 140th St.), East Chicago • (219) 391-8362 • <i>no website</i>	9: 27 / 1,390 / unrated

Oak Knoll 11200 Whitcomb St., Crown Point • (219) 663-3349 • www.hegangolf.com	18: 70 / 5,703 / 67.3 / 107 Dave Steuer (GM)
Palmira 12111 W. 109th St., St. John • (219) 365-4331 • www.palmiragolf.com	18: 72 / 6,921 / 72.7 / 122 Rich Nicpon (GM)
Pheasant Valley 3838 W. 141st Ave., Crown Point • (219) 663-5000 • www.hegangolf.com	18: 72 / 6,869 / 72.3 / 126 Pat Hedge
River Pointe 6700 Country Club Rd., Hobart • (219) 942-2747 • www.whitehawkcountryclub.com/river-pointe	Pointe 9: 36 / 3,256 Pines 9: 36 / 3,167 Ponds 9: 36 / 3,299
Scherwood 600 E. Joliet St., Schererville • (219) 865-2554 • www.scherwood.com	18: 71 / 6,849 / 73.4 / 125 9: 30 / 1,463 / unrated Marv Hanson
South Gleason Park 3400 Jefferson St., Gary • (219) 980-1089 • www.gary.in.us/parks/golf.asp	18: 71 / 6,312 / 68.5 / 108 Nymrod Adkins
South Shore 14400 Lake Shore Dr., Cedar Lake • (219) 374-6070 • www.golfssc.com/	18: 70 / 5,466 / 67.0 / 118 Dennis Scaggs
Summertree 2323 E. 101st Ave., Crown Point • (219) 663-0800 • www.hegangolf.com	18: 72 / 6,596 / 71.9 / 124
Turkey Creek 6400 Harrison St., Merrillville • (219) 980-5170 • www.turkeycreekgolf.com	18: 70 / 6,202 / 69.3 / 118 Chris Ciocoriano
White Hawk 1001 White Hawk Dr., Crown Point • (219) 661-2323 • www.whitehawkcountryclub.com	Grey / Black 18: 72 / 7,011 / 73.9 / 141 Red / Silver 18: 72 / 7,201 / 75.1 / 139 Drew Brining
Wicker Memorial Park 8554 Indianapolis Blvd., Highland • (219) 838-9809 • www.wickermemorialpark.com	18: 72 / 6,887 / 72.6 / 122 Bill Springer

ILLINOIS OUTLYING NORTHWEST GALENA TO ROCKFORD / DEKALB

Aldeen 1900 Reid Farm Rd., Rockford • (815) 282-4653 • www.aldeengolfclub.com	18: 72 / 7,131 / 74.7 / 139 Dennis Geddes	Winnebago
Alpine Hills 4402 Larson Ave., Rockford • (815) 966-8737 • http://rockfordparkdistrict.org/alpinehills	5: remodeled for junior golf	Winnebago
Apple Canyon Lake 14A200 Canyon Club Dr., Apple River • (815) 492-2477	9: 36 / 3,280 / 70.1 / 110 http://www.applecanyonlake.org/amenities/golf.php	Jo Daviess
Atwood Homestead 8990 Old River Rd., Rockford • (815) 623-2411 • www.winnebago-county-golf.com	18: 72 / 7,431 / 74.7 / 127	Winnebago
Beaver Creek 19619 Leroy Center Rd., Capron • (815) 569-2427 • http://www.beavercreekgolf.com/	9: 35 / 3,033 / unrated	Boone
Blackhawk Run 3501 S Golf Rd., Stockton • (815) 947-3011	18: 72 / 6,378 / 72.0 / 127 http://www.galena.org/places/black-hawk-run-golf-course/	Jo Daviess
Brush Creek 2001 W Saint James Rd., Orangeville • (815) 789-4042 • http://www.brushcreekgolf.com/	9: 36 / 3,218 / unrated	Stephenson

Illinois Golfer lists more facilities (598) than any other publication in the state!

Buena Vista 131 Buena Vista Dr., DeKalb • (815) 758-4812 • www.dekalbparkdistrict.com	9: 32 / 2,477 / 31.3 / 53	DeKalb Russ Robinson
Chicago Golf & Tiki Tees 210 S. Pointe Ct, DeKalb • (815) 517-1449 • http://chicagogolfandtikitees.com/	9: 34 / 2,690 / unrated	DeKalb
Cross Creek 15523 Henry Rd., Morrison • (815) 772-7966 • http://www.crosscreekgolfandestates.com/	9: 36 / 2,958 / 33.5 / 103	Whiteside
Deer Valley 3298 Hoover Rd., Deer Grove • (815) 438-4653 • www.dvforegolf.com	Deer Valley 18: 71 / 6,415 / 70.7 / 124 Par 3 9: 27 / 715 / unrated	Whiteside Chris Sandell
Eagle Ridge Resort & Spa Hwy. 20 at Galena Territory, Galena • (815) 777-5000 • www.eagleridge.com	General 18: 72 / 6,820 / 73.2 / 142 North 18: 72 / 6,836 / 73.2 / 134 South 18: 72 / 6,862 / 73.7 / 140 East 9: 34 / 2,648 / 66.0 / 117	Jo Daviess Ikhlas Ahmed
Elliot 888 S. Lyford Rd., Rockford • (815) 332-5130 • www.rockfordparks.org	18: 72 / 6,433 / 70.3 / 120	Winnebago David Claeysens
Emerald Hill 16802 Prairieville Rd., Sterling • (815) 622-6204 • www.emeraldhillgolf.com	18: 72 / 6,318 / 70.3 / 121	Whiteside Kristen Wegmann (GM)
Fairways 555 S. Seventh St., Rochelle • (815) 562-6666 • www.rochellectrountryclub.com	18: 66 / 4,649 / 64.4 / 104	Ogle Randy Mershon
Galena 11557 W US Highway 20, Galena • (815) 777-3599 • http://galenagolf.webs.com	18: 71 / 6,571 / 71.5 / 116	Jo Daviess
Ingersoll 101 Daisyfield Dr., Rockford • (815) 987-8834 • www.rockfordparks.org	18: 71 / 6,107 / 68.9 / 111 Youth 4: par up to player	Winnebago Nancy Joan Kauzlarich
Lacoma 8080 Timmerman Dr., East Dubuque • (815) 747-3874 • http://lacomagolf.com/	Blue 18: 71 / 6,814 / 72.7 / 123 Red / Gold 18: 71 / 5,663 / 68.0 / 114 Par 3 9: 27 / 1,000 / unrated	Jo Daviess
Lake Carroll 2911 Ironwood Dr., Lanark • (815) 493-2808 • www.visitlakecarroll.com	18: 72 / 6,418 / 71.6 / 130	Carroll
Lake Erie 900 Lakeside Dr., Erie • (309) 659-2250 • www.lakeeriecountryclub.com	9: 36 / 3,069 / 34.4 / 108	Whiteside
Ledges 7111 McCurry Rd., Roscoe • (815) 389-0979 • www.winnebagocountygolf.com	18: 72 / 6,740 / 72.5 / 129	Winnebago Steven Hare
Lost Nation 6931 S. Lost Nation Rd., Dixon • (815) 652-4212 • www.lostnationgolf.com	18: 71 / 6,222 / 69.5 / 114	Lee Brian Goad
Macktown 2221 Freepoint Rd., Rockton • (815) 624-7410 • www.winnebagocountygolf.com	18: 71 / 5,756 / 67.9 / 112	Winnebago
Newburg Village 253 Club House Dr., Cherry Valley • (815) 332-9002 • www.newburgvillage.net/	9: 36 / 3,134 / 70.0 / 121	Winnebago
Palisades 18280 Ill. Rt. 84, Savanna • (815) 273-2141 • http://palisadesgolfcourse.com/	9: 33 / 2,369 / 62.2 / NA	Carroll
Park Hills 3240 W Stephenson St., Freeport • (815) 235-3611 • www.parkhillsgolfcourse.com	East 18: 72 / 6,477 / 69.9 / 116 West 18: 72 / 6,627 / 71.3 / 121	Stephenson
Timber Pointe 5750 Woodstock Rd., Poplar Grove • (815) 544-1935 • www.golfthepointe.com	18: 72 / 7,077 / 73.8 / 125	Boone Randy Schairer

Prairie Pines 6236 State Rd. 38, DeKalb • (815) 758-5249 • www.prairiepinesgolf.com	9: 34 / 2,465 / 28.0 / 113	DeKalb
PrairieView 7993 N. River Rd., Byron • (815) 234-4653 • www.prairieviewgolf.com	18: 72 / 7,135 / 73.5 / 133	Ogle
Prophet Hills 4319 Bishop Rd., Prophetstown • (815) 537-5226 • www.prophethills.com	9: 35 / 3,040 / 67.6 / 106	Whiteside Jodi Farral (GM)
Red Barn 12379 Wagon Wheel Rd., Rockton • (815) 624-8037 • www.redbarngolfcourse.com	9: 32 / 2,120 / 28.0 / 113	Winnebago
River Heights 1100 S. Annie Glidden Rd., DeKalb • (815) 758-1550 • www.riverheightsgc.com	18: 72 / 6,528 / 70.8 / 126	DeKalb Roger Huber
Rock River Golf & Pool 3901 Dixon Ave., Rock Falls • (815) 625-2322 • www.rockriversupperclub.com/golf	18: 70 / 5,920 / 69.2 / 123	Whiteside
Sandburr Run 5020 Illinois Rt. 84, Thomson • (815) 902-6063 • website inactive	9: 36 / 3,047 / unrated	Carroll
Sandy Hollow 2500 Sandy Hollow Rd., Rockford • (815) 987-8836 www.rockfordparkdistrict.org/sandy-hollow	18: 71 / 6,228 / 69.3 / 115	Winnebago Nancy Joan Kauzlarich
Savannah Oaks of Candlewick Lake 100 Savannah Ridge Dr., Poplar Grove • (815) 765-0111 • http://candlewicklake.org/	9: 35 / 2,925 / NA	Boone
Sinnissippi 1401 N. Second St., Rockford • (815) 987-8838 • www.rockfordparks.org	9: 37 / 3,230 / 35.5 / 130	Winnebago
Stagecoach 621 W Lena St., Lena • (815) 369-2222 • no website	9: 35 / 2,653 / 34.3 / 110	Stephenson
Storybrook 2124 W Storybrook Rd., Hanover • (815) 591-2210 • http://storybrook.com/	18: 72 / 6,194 / 69.6 / 118	Jo Daviess Mike Dascher (GM)
Shady Oaks 577 U.S. Hwy. 52, Sublette • (815) 849-5424 • www.shadyoakssc.com	18: 71 / 6,212 / 69.6 / 123	Lee
Sunset 216 Sunset Hill, Mount Morris • (815) 734-4839 • www.sunsetgolfmm.com	9: 36 / 3,169 / 69.5 / 115	Ogle
Swan Hills 2600 Gustafson Rd., Belvidere • (815) 547-3232 • no website	18: 71 / 6,359 / 71.0 / 113	Winnebago Catherine Beaves
Sycamore 940 E. State St., Sycamore • (815) 895-3884 • www.sycamoreparkdistrict.com	18: 71 / 5,993 / 68.0 / 114	DeKalb Kirk Lundbeck
Timber Creek 729 Timber Creek Rd., Dixon • (815) 288-5110 • www.timbercreekdixon.com	18: 71 / 6,504 / 71.6 / 126	Lee
Westlake Village 3820 Westlake Village Dr., Winnebago • (815) 335-7177 • http://golfwestlake.com/	18: 71 / 6,881 / 70.0 / 113	Winnebago
Woodbine Bend 3500 E Center Rd., Stockton • (815) 858-3939 • www.woodbinebend.com	18: 72 / 6,563 / 71.8 / 124	Jo Daviess
Wolf Hollow / Lena 6546 N. Shippee Rd., Lena • (815) 369-5513 • www.wolfhollowgolf.net	18: 71 / 6,408 / 70.9 / 122	Stephenson

QUAD CITIES ROCK ISLAND TO MONMOUTH

Arsenal Island 1838 Gillespie Ave., Rock Island • (309) 793-1604 • www.arsenalislandgolf.com	18: 71 / 6,585 / 70.5 / 124	Rock Island
Baker Park 1095 Cambridge Rd., Kewanee • (309) 852-2872 • http://kewanee-parkdistrict.org/golf/	18: 71 / 6,170 / 68.7 / 112	Henry
Bunker Links 3500 Lincoln Park Dr., Galesburg • (309) 344-1818 www.ci.galesburg.il.us/services/bunker_links_golf/	18: 71 / 6,036 / 68.7 / 116	Knox
Byron Hills 23316 94th Ave. N, Port Byron • (309) 523-2664 • www.byronhills.com	18: 71 / 6,465 / 70.5 / 115	Rock Island
Champion at Hillcrest Resort 16260 E. 350th St., Orion • (309) 755-6550 • http://hillcresteventcenter.com	9: 30 / 1,848 / unrated	Henry
Country View 8492 N. 2300th Ave., Geneseo • (309) 441-5272 • https://countryviewgolfcourse.net	9: 35 / 2,865 / unrated	Henry
Fyre Lake National 1402 Lakeview Ct., Sherrard • (309) 644-4575 • www.fyrelakegolf.com	18: 70 / 6,505 / 72.1 / 130	Mercer
Gibson Woods Monmouth Park, Monmouth • (309) 734-9968 • www.gibsonwoods.com	18: 71 / 6,362 / 70.9 / 119	Knox
Golfmohr 16724 Hubbard Rd., East Moline • (309) 496-2434 • www.golfmohr.com	18: 72 / 6,855 / 71.4 / 124	Rock Island
Hawthorn Ridge 621 Hwy. 94, Aledo • (309) 582-5641 • no website	18: 72 / 6,701 / 72.0 / 120	Mercer
Highland Springs 9500 35th St. W, Rock Island • (309) 732-7265 • www.rigov.org	18: 72 / 6,777 / 70.2 / 129	Rock Island Todd Winter (GM)
Indian Bluff 6200 78th Ave., Milan • (309) 799-3868 • www.indianbluffgolfcourse.com	18: 70 / 5,700 / 67.6 / 113	Rock Island
Kewanee Dunes 3536 Midland Rd., Kewanee • (309) 852-4508 • www.kewaneedunes.com	18: 72 / 6,832 / 72.4 / 130	Henry Colby Horsley (GM)
Laurel Greens 1133 E. US Hwy. 150, Knoxville • (309) 289-4146 • http://laurelgreens.wix.com/laurel-greens	Laurel 1 9: 36 / 2,897 Laurel 2 9: 36 / 3,159 Laurel 3 9: 36 / 3,238 Laurel 4 9: 36 / 3,095	Knox
Maple Bluff E. 1600 St., Geneseo • (309) 944-5418 • www.golfmaplebluffgeneseo.com	18: 72 / 6,569 / 71.1 / 121	Henry Dennis Peck (GM)
Oak Run 1468 Knox Rd., 1725 N., Dahinda • (309) 879-2582 • www.oakrunpublicgolfcourse.com	18: 71 / 6,417 / 68.5 / 115	Knox
Saukie Municipal 3101 38th St., Rock Island • (309) 732-2278 • http://rigov.org/294/Saukie-Golf-Course	18: 66 / 5,152 / 63.4 / 92	Rock Island
TPC at Deere Run 3100 Heather Knoll, Silvis • (309) 796-6000 • www.tpc.com/tpc-deere-run	18: 71 / 7,258 / 75.8 / 144	Rock Island Brian DeJohn

Follow Illinois Golfer on Twitter: @illinoisgolfer

NORTH CENTRAL LASALLE-PERU TO BLOOMINGTON

Anderson Fields 1901 N. Bloomington St., Streator • (815) 672-3702 • www.ci.streator.il.us/anderson-fields.php	9: 35 / 2,688 / unrated	LaSalle
Blue Grass Creek 10521 Boston School Rd., Minier • (309) 392-2094 • no website	18: 36 / 3,048 / 35.0 / 113	Tazewell
The Bourne 2359 N. 35th Rd., Norway • (815) 496-2301 • no website	18: 72 / 6,355 / 70.0 / 123	LaSalle Deb Rollo
Coyote Creek 8201 W. Lancaster Rd., Bartonville • (309) 633-0911 • http://golffcoyotecreek.com/	18: 72 / 6,701 / 72.3 / 135	Peoria
Crane Creek 24205 E. Cr 700 N., Kilbourne • (309) 538-9141 • www.golfranecreek.com	18: 72 / 7,390 / 74.7 / 138	Mason
Dayton Ridge 3076 E. 18th Rd., Ottawa • (815) 434-0145 • no website	18: 36 / 3,050 / 35.1 / 116	LaSalle
The Den at Fox Creek 3002 Fox Creek Rd., Bloomington • (309) 434-2300 • www.thedengc.com	18: 72 / 6,926 / 73.3 / 134	McLean Jason Wingate
Detweiller Park 8412 N. Galena Rd., Peoria • (309) 692-7518 • www.ppdgolf.org/detweiller	9: 29 / 1,758 / 55.1 / unslpded	Peoria
Dwight 31577 N 2400 E Rd, Dwight • (815) 584-9825 • www.dwightcountryclub.com	18: 72 / 6,306 / unrated	Livingston
Earlville 400 Oak St., Earlville • (815) 246-9329 • no website	9: 32 / 2,442 / 35.5 / 114	LaSalle
Eastwood 2000 Eastwood Ave., Streator • (815) 673-5553 • www.eastwoodtwincreeks.com/eastwood	9: 36 / 3,132 / 35.0 / 120	LaSalle
Edgebrook Suydam Rd., Sandwich • (815) 786-3058 • www.sandwichgolf.com	18: 72 / 6,294 / 70.9 / 126	DeKalb Clyde Henning
Edgewood Park RR 89, McNabb • (815) 882-2317 • www.edgewoodparkgolfclub.com	18: 72 / 6,621 / 70.9 / 117	Putnam Ray DeFrank (GM)
El Paso 2860 County Rd. 600 N., Kappa • (309) 527-5225 • www.elpasogolfclub.com	18: 71 / 6,111 / 69.6 / 125	Woodford
Fairlakes 2203 County Rd. 600 N., (S. of) Secor • (309) 744-2222 • http://fairlakesgc.weebly.com	18: 67 / 5,207 / 66.4 / 102	Woodford
Fon du Lac 123 Par 3 Ln., East Peoria • (309) 699-3923 www.fondulacpark.com/facilities/fondulac-golf-course	9: 27 / 1,255 / 28.0 / 110	Tazewell
Four Willows 34323 E. 1000 N., Mason City • (217) 482-3349 • no website	9: 35 / 2,911 / unrated	Mason
Green River 15212 Illinois Highway 92, Walnut • (815) 379-2227 • no website	9: 34 / 2,743 / unrated	Bureau
Hazy Hills 25258 N. 1350 East Rd., Hudson • (309) 726-9600 • www.hazyhillsgolf.com	9: 35 / 2,900 / unrated	McLean
Hidden Lake 12985 350 East St., Sheffield • (815) 454-2660 • www.hiddenlakegolfclub.com Pete Macnaughton	18: 70 / 5,735 / 67.1 / 115	
Highland Park 1613 S. Main St., Bloomington • (309) 434-2200 http://4.17.232.139/parks/golf-courses/Highland-Park/general-info.htm	18: 70 / 5,597 / 66.8 / 116	McLean

Hillcrest 1829 Washington Rd., Washington • (309) 444-9033 • http://hillcrestgolfcenter.com	18: 59 / 3,095 / unrated	Tazewell
Hunter's Ridge 12927 Ill. Hwy. 26, Princeton • (815) 879-6531 • www.huntersridgegc.com	18: 72 / 6,337 / 70.5 / 125	Bureau Wanda Nelson
Indian Creek 7429 N. 2200 E. Rd., Fairbury • (815) 692-2655 • http://indiancreekcc.net	9: 36 / 2,920 / 34.6 / 116	Livingston
Indian Hills 9468 1725 E. St., Tiskilwa • (815) 646-4856 • no website	18: 35 / 2,846 / 33.3 / 105	Bureau
Indian Oaks 603 E. Preserve Rd., Shabbona • (815) 824-2282 • www.indianoakscountryclub.com	9: 36 / 3,345 / 71.8 / 118	DeKalb
Indian Springs 36846 Comanche Dr., Saybrook • (309) 475-4111 • www.golfatindiansprings.net (inactive)	9: 36 / 3,180 / 71.8 / 119	McLean
Ironwood 1901 N. Towanda Ave., Normal • (309) 454-9620 • www.golffironwood.org	18: 72 / 6,990 / 72.5 / 122	McLean
Kaufman Park 800 W. Center St., Eureka • (309) 467-2523 • http://kaufmanpark.com/	9: 34 / 2,725 / 66.2 / 113	Woodford
Kellogg 7716 N. Radnor Rd., Peoria • (309) 691-0293 • http://www.ppdgolf.org/kellogg/	Kellogg 18: 72 / 6,755 / 71.9 / 129 Executive 9: 34 / 2,901 / 33.7 / 114	Peoria
Lacon 1400 State Rt. 17, Lacon • (309) 246-7650 www.facebook.com/Lacon-Country-Club -883831921643806/	9: 35 / 2,790 / 68.0 / 110	Marshall
Lakewood Rt. 78, Bath • (309) 546-2274 • www.facebook.com/lakewoodgolfclub4	9: 36 / 3,365 / 35.7 / 119	Mason
LeRoy 27307 Rt. 150, LeRoy • (309) 962-3421 • website inactive	9: 36 / 3,000 / 33.4 / 105	McLean
Lick Creek 2210 N. Parkway Dr., Pekin • (309) 346-0077 • www.pekinparkdistrict.org	18: 72 / 6,910 / 73.5 / 137	Tazewell
Links At Ireland Grove 3807 Ballyunion Rd., Bloomington • (309) 661-8040 • www.thelinksatirelandgrove.com/	9: 29 / 1,575 / unrated	McLean
Madison Park 2735 Dr. Martin Luther King Jr. Dr., Peoria • (309) 673-7161 • www.ppdgolf.org/madison/	18: 69 / 5,476 / 64.5 / 96	Peoria
Mendota 35666 Rt. 34 W., Mendota • (815) 538-7241 • www.mendotagolfclub.com/	18: 70 / 6,186 / 69.5 / 117	LaSalle
Metamora Fields 801 Progress St., Metamora • (309) 367-4000 • www.metamorafields.com	18: 71 / 7,023 / 74.1 / 130	Woodford Jeff Roche
Nettle Creek 5355 N. Saratoga Rd., Morris • (815) 941-4300 • www.nettlecreek.com	18: 71 / 6,562 / 72.1 / 130	Grundy Kurt Nolen
Newman 2021 W. Nebraska Ave., Peoria • (309) 674-1663 • www.ppdgolf.org/newman/	18: 71 / 6,908 / 72.9 / 132	Peoria
Parkview 2300 Broadway St., Pekin • (309) 346-8494 • www.parkviewgolfcourseil.com/	18: 70 / 6,002 / 65.4 / 102	Tazewell
Pine Hills 1667 N. 2501st Rd., Ottawa • (815) 434-3985 • www.ottawapinehillsgolfclub.com	9: 35 / 3,203 / 72.0 / 122	LaSalle
Pine Lakes RR 2, Washington • (309) 745-9344 • www.golffinelakesgc.com	18: 71 / 6,385 / 70.3 / 122	Tazewell
Pontiac Elks Rt. 116 W at Elks Club Rd. (east of I-55), Pontiac • (815) 842-1249 • www.pontiacelks.com	18: 72 / 6,804 / 73.0 / 132	Livingston

Prairie Lake 2550 N 32nd Rd., Marseilles • (815) 795-5107 • no website	9: 37 / 3,218 / 35.4 / 114	LaSalle
Prairie Vista 502 W. Hamilton Rd., Bloomington • (309) 434-2217 http://4.17.232.139/parks/golf-courses/Prairie-Vista/general-info.htm	18: 72 / 6,745 / 72.2 / 129	McLean
Quail Meadows 2215 Centennial Dr., Washington • (309) 694-3139 • www.quailmeadowsgolf.com	18: 72 / 6,916 / 72.9 / 124	Tazewell
Senica's Deer Park 100 Deer Park Ln., Oglesby • (815) 667-4239 • no website	18: 71 / 6,378 / 70.6 / 120	LaSalle Jesse Cavanaugh
Senica's Oak Ridge 658 U.S. Hwy. 6, LaSalle • (815) 223-7273 • www.senicasoakridge.net	18: 72 / 6,830 / 72.1 / 131	LaSalle Jesse Cavanaugh
Shagbark 1262 N 640 E Rd, Onarga • (815) 268-7308 • www.shagbarkgolf.com	9: 36 / 2,867 / 32.5 / unslpded	Iroquis
Silver Ridge 3069 N. Hill Rd., Oregon • (815) 734-4440 • no website	18: 72 / 7,005 / 73.5 / 130	Ogle Jason Wombacher
South Bluff 229 N. 2550th Rd., Peru • (815) 223-0603 • www.southbluff.net	9: 36 / 2,851 / 33.2 / 106	LaSalle
Spring Creek 286 Spring Creek Dr., Spring Valley • (815) 894-2137 • www.springcreek-golfcourse.com	18: 72 / 6,225 / 71.9 / 125	Bureau
Sunset Hills 1800 Summit Dr., Pekin • (309) 347-7553 • www.mashiespub.com	18: 71 / 6,649 / 71.9 / 129	Tazewell
Swan Creek 1189 Golf Course Rd., Avon • (309) 465-3127 • www.swancreekgolfclub.com	18: 72 / 6,814 / 72.7 / 127	Fulton
Twin Creeks 30396 N. 700 E. Rd., Manville • (815) 642-4220 • www.eastwoodtwincreeks.com/twin-creeks	9: 36 / 3,036 / 69.7 / unslpded	Livingston
Wyaton Hills 17879 1500 North Ave., Princeton • (815) 872-2641 • no website	9: 36 / 3,071 / 66.8 / 117	Bureau Max Hallberg Jr.
WeaverRidge 5100 WeaverRidge Blvd., Peoria • (309) 691-3344 • www.weaverridge.com	18: 72 / 7,030 / 73.1 / 136	Peoria Clay Stevens
Weibring at Illinois State 800 Gregory St., Normal • (309) 438-8065 • www.isugolf.com	18: 72 / 6,915 / 72.7 / 131	McLean Laura Provost
Wolf Creek 21062 N 1850 East Rd., Cayuga • (815) 842-9008 • www.golfatwolfcreek.com	18: 72 / 6,637 / 69.1 / 117	Livingston Brett Hendren

WEST CENTRAL QUINCY TO JACKSONVILLE

Arrowhead Heights 1403 S. Main St., Camp Point • (217) 593-6619 • http://arrowheadheights.com	18: 72 / 6,420 / 70.7 / 125	Adams
Bow Lake 1500 William R. Croxville Dr., Barry • (217) 335-7043 • www.bowlakegolf.com	18: 35 / 2,820 / 33.3 / 106	Pike
Carthage 1561 N. County Rd. 1830, Carthage • (217) 357-3625 • www.carthagegolfclub.com	9: 35 / 2,805 / 33.5 / unslpded	Hancock
Cedar Crest 3312 N. 36th St., Quincy • (217) 223-1210 • www.cedarcrestquincy.com	9: 36 / 3,054 / 67.6 / 111	Adams
Deer Run 1 Deer Run Dr., Hamilton • (217) 847-3623 www.facebook.com/pages/Deer-Run-Golf-Course/113877965310098	18: 72 / 6,073 / 69.7 / 120	Hancock

Gold Hills 10980 E. 900th St., Colchester • (309) 837-2930 • www.gold-hills.com/main_menu.htm	18: 70 / 6,540 / 69.9 / 115	McDonough
Knights of Columbus Par 3 700 S. 36th St., Quincy • (217) 222-4105 • http://www.quincykofo.org/sportsmenu/11-golf	9: 27 / 897 / unrated	Adams
Lamoine Valley W. Archer at N. E St., La Harpe • (217) 659-3918 • no website	9: 27 / 2,568 / unrated	Hancock
Links at Jacksonville 319 Holkenbrink Dr., Jacksonville • (217) 479-4663 • www.linksofjacksonville.com	18: 72 / 6,836 / 72.1 / 122 Executive 9: 27 / 2,463 / unrated	Morgan
Mussatto at W. Illinois 1215 Tower Rd., Macomb • (309) 298-3676 • www.wiu.edu/student_services/golf_course/	18: 72 / 6,862 / 73.6 / 136	McDonough
Northridge Hills 1265 Sandusky Rd., Jacksonville • (217) 243-4241 • www.northridgehills.com (inactive)	9: 32 / 2,316 / 31.2 / 104	Morgan
Plum Creek 1135 Golf Course Rd., Winchester • (217) 742-9018 • no website	9: 36 / 3,150 / 34.9 / 114	Scott
Rolling Greens Rt 99 N., Mount Sterling • (217) 773-3085 • www.rollinggreensbc.com	18: 72 / 6,715 / unrated	Brown
Scripps Park RR 2, Rushville • (217) 322-4444 • no website	18: 70 / 5,660 / 66.7 / 107	Schuyler
Shaw Creek 300 1/2 Miller St., Bushnell • (309) 772-3422 • no website	9: 36 / 2,917 / unrated	McDonough
Tri County Off Hwy. 61, Augusta • (309) 458-3226 www.facebook.com/Tri-County-Golf-Course-85700863251/	9: 34 / 2,637 / unrated	Hancock
Twin Oaks 800 W. Adams St., Blandinsville • (309) 652-9519 • no website	9: 35 / 3,004 / unrated	McDonough
Westview 2150 S. 36th St., Quincy • (217) 223-7499 • www.westviewgolf.com	Glasgow 18: 71 / 6,400 / 69.7 / 117 Course 2 9: 35 / 3,057 / 68.8 / 112	Adams David Morgan
MID CENTRAL SPRINGFIELD TO DANVILLE		
Bent Tree 14618 E. County Rd. 400 N., Charleston • (217) 348-1611 • no website	18: 70 / 6,240 / unrated	Coles
Bergen 200 Eastdale Ave., Springfield • (217) 753-6211 http://springfieldparkdistrictgolf.org/bergen.html	18: 35 / 2,657 / 32.4 / 97	Sangamon
Brookhill 3150 County Rd 1700 E, Rantoul • (217) 893-1200 • www.gplfbrookhillgc.com	18: 72 / 6,597 / 71.3 / 125	Champaign
Brookhills 5350 Old Jacksonville Rd., Springfield • (217) 787-8576 • no website	18: 31 / 1,918 / 29.8 / 90	Sangamon
Bunn 2500 S. 11th St., Springfield • (217) 522-2633 • http://springfieldparkdistrictgolf.org/bunn.html	18: 72 / 6,297 / 70.2 / 122	Sangamon
Country Hills 21723 Smoot St., Greenvew • (217) 632-7242 • www.countryhillsgc.com	18: 72 / 6,414 / 70.0 / 119	Menard
Eagle Ridge (Sycamore Hills) 928 Clinton Rd., Paris • (217) 463-3434 • www.eagleridgeparis.com	18: 6,589 / 72.2 / 124	Edgar

Edgewood 16497 Kennedy Rd., Auburn • (217) 438-3221 • www.golfedgewood.com	18: 71 / 6,667 / 71.9 / 128	Sangamon
Fox Prairie 3035 Co. Hwy. 38, Windsor • (217) 459-2805 • www.foxprairiegolf.com	18: 71 / 6,712 / 71.8 / 128	Shelby
Harrison Park 1300 W. Voorhees St., Danville • (217) 431-2266 • www.harrisonparkgolfcourse.com	18: 71 / 6,111 / 70.3 / 119	Vermilion
Hubbard Trail 13937 E. 3680 North Rd., Hoopeston • (217) 748-6521 • www.hubbardtrail.com	9: 36 / 3,042 / unrated	Vermilion
Ironhorse 2000 Ironhorse Dr., Tuscola • (217) 253-6644 • www.ironhorsegc.com	18: 72 / 7,131 / 73.0 / 125	Douglas
Lake of the Woods 405 N. Lake Of The Woods Rd., Mahomet • (217) 586-2183 • www.golftהלake.com	18: 72 / 6,578 / 71.2 / 125 Hartwell C. Howard Par 3 9: 27 / 865 / unrated	Champaign
Lake Shore 1460 E. 1000 North Rd., Taylorville • (217) 824-5521 • https://golflakeshore.com	18: 72 / 6,778 / 72.0 / 117	Christian
Legends of Champaign 4551 Nicklaus Dr., Champaign • (217) 863-2145 • www.legendsofchampaign.com	18: 29 / 1,479 / unrated	Champaign
Lincoln Elks RR 4, Box 25, Lincoln • (217) 732-4010 • www.elks914.org/Golf.aspx	18: 71 / 6,200 / 68.6 / 120	Logan
Lincoln Greens 700 E. Lake Dr., Springfield • (217) 786-4111 http://springfieldparkdistrictgolf.org/lincoln-greens.html	18: 72 / 6,869 / 72.7 / 127	Sangamon
Long Bridge 1055 W. Camp Sangamo Rd., Springfield • (217) 744-8311 • www.longbridgegc.com	18: 36 / 2,834 / 33.4 / 107	Sangamon
Marshall 110 Golf Course Rd., Marshall • (217) 826-2404 • no website	9: 35 / 2,747 / 32.7 / 110	Clark
Meadowview 6489 Meadowview Ln., Mattoon • (217) 258-7888 • https://meadowviewgolf.com	18: 72 / 6,745 / 72.6 / 121	Coles
Moweaqua 2598 E. 1900 North Rd., Moweaqua • (217) 768-3411 • http://moweaquagolfcourse.com	18: 72 / 6,307 / 69.3 / 112	Christian
National at Eagle Creek Eagle Creek State Park, Findlay • (217) 756-5550 • www.golfateaglecreek.com	18: 72 / 6,924 / 73.5 / 134	Shelby
North Greens 901 NE 1st St., Atlanta • (217) 648-5500 • https://m.facebook.com/northgreens/	9: 36 / 3,390 / 72.0 / 125	Logan
Norton Knolls N. Reel St., Oakland • (217) 346-3102 • https://m.facebook.com/NortonKnollsGolfCourse	9: 34 / 2,558 / 65.0 / 111	Coles
Oak Terrace Resort 100 Beyers Lake, Pana • (217) 651-4250 • https://oakterraceresort.com/golf	18: 72 / 6,375 / 70.5 / 123	Christian
The Oaks 851 Dave Stockton Dr., Springfield • (217) 528-6600 • www.theoaksgolfcourse.com	18: 70 / 6,130 / 68.8 / 117	Sangamon
Pasfield 1700 W. Lawrence Ave., Springfield • (217) 698-6049 http://springfieldparkdistrictgolf.org/pasfield.html	9: 34 / 2,299 / 30.8 / 89	Sangamon
Piper Glen 7112 Piper Glen Dr., Springfield • (217) 483-6537 • www.piperglen.com	18: 72 / 7,005 / 73.5 / 132	Sangamon Audra Burks
The Rail 1400 S. Club House Dr., Springfield • (217) 525-0365 • www.railgolf.com	18: 72 / 6,583 / 71.7 / 127	Sangamon Ryan Matrich

Railside 120 W. 19th St., Gibson City • (217) 784-5000 • www.railside.com	12	Ford Cody Warmoth
Red Tail Run 520 W. Grove Rd., Decatur • (217) 422-2211 • www.redtailrun.org	18: 72 / 7,351 / 74.4 / 132	Macon
Rogala Public Links 1322 State Hwy. 16, Mattoon • (217) 235-5518 • http://rogalagolf.com/Home_Page_S165.html	18: 35 / 3,069 / 37.3 / unsloped	Coles
Scovill 3909 W. Main St., Decatur • (217) 429-6243 • http://www.decatour-parks.org/golf/scovill-golf-club	18: 71 / 5,925 / 68.4 / 119	Macon
Shamblee 442 S Shore Dr., Petersburg • (217) 632-2140 • http://www.golfshamblee.com	18: 72 / 6,748 / 72.1 / 119	Menard
Stone Creek 2600 Stone Creek Blvd., Urbana • (217) 367-3000 • www.stonecreekgolfclub.com Mickey Finn	18: 72 / 7,118 / 74.1 / 131	Champaign
Timberlake 957 CR 700E, Sullivan • (217) 797-6496 • http://timberlakegolfcourse.com	9: 35 / 3,045 / 34.7 / 112	Moultrie
Turtle Run 332 E. Liberty Ln., Danville • (217) 422-8876 • www.turtleungolfclub.com	18: 72 / 6,771 / 72.1 / 127	Vermilion
Univ. of Illinois 800 Hartwell Dr., Savoy • (217) 359-5613 • www.uofigolf.com	Orange 18: 72 / 6,896 / 72.9 / 130 Blue 18: 72 / 6,479 / 70.2 / 119	Champaign Michael Wallner
Willow Pond 808 Golf Course Rd., Rantoul • (217) 893-9000 • http://www.willowpondgolf.com	18: 72 / 6,799 / 71.8 / 115	Champaign
Wolf Creek 2521 Perrysville Rd., Danville • (217) 446-1025 • www.wolfcreeknine.com	9: 35 / 3,120 / unrated	Vermilion
Woodlawn 905 E. Richardson St., Farmer City • (309) 928-3215 • www.woodlawncountryclubfc.com	9: 36 / 3,117 / 69.0 / 117	DeWitt
GREATER METRO EAST GRANITE CITY TO CARLYLE		
Acorns 3933 Ahne Rd., Waterloo • (618) 939-7800 • www.acornsgolflinks.com	18: 72 / 6,701 / 72.7 / 135	Monroe
American Legion Post Ill. Rt. 157, Edwardsville • (618) 656-9774 • www.edwardsvillelegion.com/golf-course.html	9: 35 / 2,652 / unrated	Madison
Annbriar 1524 Birdie Ln., Waterloo • (888) 939-5191 • www.annbriar.com	18: 72 / 6,863 / 72.8 / 136	Monroe
Arlington Greens 200 Arlington Dr., Granite City • (618) 931-5232 • www.arlingtongreens.com	18: 72 / 6,907 / 72.4 / 125	Madison
Barkau Memorial 1501 N Waterworks Rd., Okawville • (618) 243-6610 • www.rbm.golf.com	18: 71 / 6,513 / 70.9 / 128	Washington
Belk Park 880 Belk Park Rd., Wood River • (618) 251-3115 • http://belkpark.com	18: 72 / 6,812 / 71.5 / 121	Madison
Bent Oak 1725 S. Broadway, Breese • (618) 526-8181 • http://breese.org/golf-course/	18: 36 / 3,290 / unrated	Ciinton
The Bridges 1655 Columbia Bridges Rd., Columbia • (618) 281-3900 • http://columbiagolfclub.net	18: 72 / 6,998 / 73.0 / 125	Monroe
Carlyle Lake 11777 Ill. Rt. 127, Carlyle • (618) 594-2758 • http://carlylelake.com/golf	18: 36 / 3,309 / 35.4 / 124	Ciinton

Clinton Hill 3700 Old Collinsville Rd., Swansea • (618) 277-3700 • http://clintonhillgolfcourse.com	18: 71 / 6,480 / 70.6 / 129	St. Clair
Cloverleaf 3555 Fosterburg Rd., Alton • (618) 462-3022 • www.cloverleafgolfcourse.com	18: 70 / 5,514 / 64.2 / 108	Madison
Columbia 125 Aa Rd., Columbia • (618) 286-4455 • http://columbiagolfclub.net	18: 71 / 5,970 / 67.6 / 113	Monroe
Elmwood 1400 Eiler Rd., Belleville • (618) 538-5826 • www.golfatelmwood.com	18: 36 / 2,931 / unrated	St. Clair
Fox Creek 6555 Fox Creek Dr., Edwardsville • (618) 692-9400 • www.golffoxcreek.com	18: 72 / 7,027 / 74.9 / 144	Madison
Fairfield 1900 Columbia Quarry Rd., Columbia • (618) 847-7222 • www.fairfieldgolfclub.com	18: 71 / 5,864 / 66.2 / 110	Monroe
Gateway National 18 Golf Dr., Madison • (618) 482-4653 • www.gatewaynational.com	18: 71 / 7,178 / 75.0 / 138	St. Clair
Governor's Run 3300 Governors Dr., Carlyle • (618) 594-4585 • www.governorsrun.com	18: 72 / 7,013 / 73.9 / 131	Clinton
Grand Marais 5802 Lake Dr., East Saint Louis • (618) 398-9999 • www.grandmaraisgolf.com	18: 72 / 6,998 / 71.9 / 129	St. Clair
Granite City Legacy 3500 Cargil Rd., Granite City • (618) 931-4653 • www.thelegacygolfcourse.com	18: 71 / 6,327 / 70.4 / 114	Madison
Indian Mounds 3500 Kingshighway, Fairmont City • (618) 271-4000 • www.indianmoundsgolfcourse.com	18: 59 / 3,381 / unrated	St. Clair
Indian Springs 21347 Ill. Rt. 185, Fillmore • (217) 538-2392 • www.indianspringsgolf.net	18: 70 / 6,148 / 68.9 / 122	Montgomery
Lone Oak Off Hwy. 108, Carrollton • (217) 942-6166 • <i>no website</i>	9: 32 / 2,150 / unrated	Greene
Nashville 660 E Memorial Dr., Nashville • (618) 327-3821 • https://m.facebook.com/NashMGC/	18: 36 / 6,214 / 70.0 / 124	Washington
Oak Brook 9157 Fruit Rd., Edwardsville • (618) 656-5600 • http://oakbrookgc.com	East 9: 36 / 3,195 (71 / 6,231 with West) North 9: 36 / 3,605 (71 / 6,641 with West) West 9: 35 / 3,036 / 71.5 / 118	Madison
Oak Leaf 186898 Oak Leaf Country Club Rd., Girard • (618) 627-3015 • www.oakleafcc.com	9: 32 / 2,236 / 60.6 / 98	Macoupin
The Orchards 1499 Golf Course Dr., Belleville • (618) 233-8921 • www.orchardsgolfclub.com	18: 71 / 6,787 / 72.2 / 126	St. Clair
The Prairies 300 Tricentennial Ct., Cahokia • (618) 332-6944 • www.prairiesgc.com	18: 71 / 6,490 / 72.0 / 127	St. Clair
Mystic Oak (Ridge) 643 Ridge Rd., Waterloo • (618) 939-4646 • www.mysticoakgolf.com	18: 72 / 6,358 / 70.6 / 125	Monroe
River Lakes 2218 Ramsey Rd., Columbia • (618) 281-6665 • www.riverlakesgolfcourse.com	18: 71 / 5,478 / 65.7 / 100	Monroe
Rock Spring 2116 College Ave., Alton • (618) 465-9898 • www.rockspringgolfcourse.com	9: 35 / 3,015 / unrated	Madison
Rolling Hills 5801 Pierce Ln., Godfrey • (877) 610-1416 • www.rollinghillsgc.com	18: 71 / 5,687 / 66.1 / 100 Executive 9: 29 / 1,927 / unrated	Madison

Spencer T. Olin 4701 College Ave., Alton • (618) 465-3111 • http://spenceroilingolf.com	18: 72 / 6,941 / 73.5 / 135 Executive 9:	Madison Adam Rockey
Shoal Creek 505 Northwest St., Raymond • (217) 229-4545 • https://m.facebook.com/ShoalCreekGolfCourse	9: 35 / 3,172 / 35.0 / 115	Montgomery
Stonewolf 1195 Stonewolf Trl., Fairview Heights • (618) 624-4653 • http://stonewolfgolf.com	18: 72 / 6,943 / 73.5 / 137	St. Clair
Tamarack 800 Tamarack Ln., Shiloh • (618) 623-6666 • www.golfattamarack.com	18: 71 / 6,282 / 69.8 / 120	St. Clair
Terry Park 30565 Terry Park Rd., Palmyra • (217) 436-2531 • www.terryparkgc.com	18: 35 / 2,814 / 66.4 / 100	Macoupin
Timber Lakes 3120 Forest Lake Ln., Staunton • (618) 635-4653 • http://timberlakesgolfcourse.com	18: 72 / 6,960 / 72.5 / 128	Macoupin
Triple Lakes 6942 Triple Lakes Rd., Millstadt • (618) 476-9985 • http://triplelakesgolfcourse.com	18: 72 / 6,227 / 69.1 / 112	St. Clair
Twin Oaks 21900 Ill. Rt. 127, Greenville • (618) 749-5611 • www.twinoaksgolf.net	18: 36 / 3,190 / unrated	Bond
White Oak 545 Rec Area Rd., Marissa • (618) 295-2889 https://m.facebook.com/White-Oak-Golf-Course-319603801501647/	18: 36 / 3,067 / 67.1 / 109	St. Clair
Wolves Crossing 23745 N. Centennial Rd., Jerseyville • (618) 498-3178 • http://golfhgm.com/wolves-crossing	18: 71 / 6,028 / 67.3 / 107	Jersey
The Woodlands 2839 Harris Ln., Alton • (618) 462-1456 • http://golfhgm.com/the-woodlands/	18: 72 / 6,418 / 70.6 / 123	Madison
Yorktown 300 Goalby Dr., Belleville • (618) 233-2000 http://shilohil.org/parks-recreation/yorktown-golf-course	18: 54 / 2,146 / unrated	St. Clair

SOUTH EFFINGHAM TO CAIRO

Cardinal 15737 N. Beach Rd., Effingham • (217) 868-2860 www.sites.google.com/site/cardinalgolfcourse	18: 72 / 6,025 / 67.4 / 108	Effingham
Carmi 883 Country Club Rd. N. 1350, Carmi • (618) 384-5011 • www.carmacountryclub.com	9: 36 / 2,978 / 65.1 / 99	White
Chester 1310 Lehmen Dr., Chester • (618) 826-3168 • www.chestercountryclub.com	18: 36 / 3,598 / 36.0 / 120	Randolph
Colonial 3449 Old Rt. 51 S., Sandoval • (618) 247-3307 • www.sandovalcolonialgolf.com	18: 70 / 5,667 / 65.1 / 102	Marion
Crab Orchard 901 W. Grand Ave., Carterville • (618) 985-2321 • www.craborchardgolfclub.com	18: 70 / 6,420 / 71.0 / 129	Williamson
Crooked Creek 8250 E. Seven Oaks Rd., Mount Vernon • (618) 735-2445 Opened 1994 Closed aft 2011	18: 70 / 5,454 / 64.6 / 111	Jefferson
Deer Run / Heath Mem. Washington Park, Robinson • (618) 544-2350 • http://cityofrobinson.com/parks-recreation/	9: 27 / 1,071 / 33.0 / 113	Crawford
East Fork Par 3 5636 E. Branchwood Ln., Olney • (618) 395-3505 • http://eastforkgolf.com	9: 27 / 858 / unrated	Richland

Egyptian 4880 US Hwy. 51, Mounds • (618) 745-6412 • www.egyptiancountryclub.com	9: 36 / 3,042 / unrated	Pulaski
Fairfield 701 NW 9th St., Fairfield • (618) 847-7222 • www.waynecountygolf.com	18: 70 / 5,906 / unrated	Wayne
Flying M Ranch 6003 Mathis Rd., Centralia • (618) 532-8602 • <i>no website</i>	9: 32 / 2,040 / 32.0 / 113	Marion
Flora Old Highway 50, Flora • (618) 662-2500 https://m.facebook.com/Flora-Golf-and-Country-Club-165520246866770/	9: 35 / 3,054 / 36.0 / 113	Clay
Fore-Way 16041 N. 1000th St., Effingham • (217) 868-5418 • www.forewaygolfcourse.com	9: 36 / 2,910 / unrated	Effingham
The Gambit 1550 Ill. Rt. 146 E., Vienna • (618) 658-6022 • www.gambitgolf.com Closed 2015, status in limbo	18: 71 / 6,546 / 72.4 / 137	Johnson
Green Hills 3800 E. Fairfield Rd., Mount Vernon • (618) 244-3961 • www.greenhillsgolfclub.net	18: 71 / 6,490 / 72.2 / 127	Jefferson
Greenview 2801 Putter Dr., Centralia • (618) 532-7395 • www.greenviewgolfclub.com	18: 70 / 6,150 / 68.5 / 107	Marion
Hardin County (TTI) RR 1, Cave In Rock • (618) 289-4587 • www.hardincountygolfcourse.com	9: 36 / 2,657 / unrated	Hardin
Hickory Ridge 2727 W. Glenn Rd., Carbondale • (618) 529-4386 • www.cpkd.org	18: 72 / 6,863 / 73.3 / 137	Jackson Michael Day
Indian Hills 20 Indian Trail Dr., Mount Vernon • (618) 244-9697 www.facebook.com/Indian-Hills-Golf-Course-Mt-Vernon-IL-175249045826863/	18: 72 / 6,022 / 66.0 / 99	Jefferson
Jackson 5776 Country Club Rd., Murphysboro • (618) 684-2387 • www.jacksoncc.com	18: 71 / 6,034 / 69.0 / 124	Jackson
Links at Kokopelli 1527 Champions Dr., Marion • (618) 997-5656 • www.kokopelligolf.com	18: 71 / 7,039 / 74.7 / 139	Williamson
McLeansboro Golf Course Rd., McLeansboro • (618) 643-2400 • www.mclgolf.org	9: 36 / 3,228 / 70.0 / 112	Hamilton
Mount Carmel Municipal 700 Park Rd., Mount Carmel • (618) 262-5771 • www.mtcarmelgolfcourse.com	18: 71 / 6,121 / 69.2 / 123	Wabash
North County 703 W. Market St., Red Bud • (618) 282-6590 • http://nccclub.weebly.com	9: 35 / 2,842 / unrated	Randolph
Oak Glen 11234 N. 600th St., Robinson • (618) 592-3030 • www.golfoakglen.com	18: 71 / 6,086 / 67.7 / 112	Crawford
Pine Lakes 2705 S. Park Ave., Herrin • (618) 942-6816 • www.pinelakes18.com	18: 71 / 6,003 / 68.9 / 123	Williamson
Pyramid Oaks 5500 Ill. Rt. 4 S., Percy • (618) 497-8484 • www.pyramidoaks.com (website inactive)	9: 36 / 3,100 / 69.9 / 126	Randolph
Ramsey Lake RR 1 Box 221, Ramsey • (618) 423-2261 • <i>no website</i>	9: 35 / 2,750 / 62.0 / 103	Fayette
Red Hawk 6204 Ill. Rt. 154, Tamaroa • (618) 357-8712 • http://redhawkgc.net	18: 70 / 6,273 / 70.5 / 133	Perry
Rend Lake 12575 Golf Course Dr., Whittington • (618) 629-2353 • www.rendlakegolfresort.com	East-West 18: 36 / 6,812 / 71.8 / 131 South 9: 36 / 3,442 /	Franklin

Saint Elmo 1 mi. NW of Saint Elmo, Saint Elmo • (618) 829-3390 • www.stelmogolfclub.com	9: 36 / 3,220 / 35.3 / 126	Fayette
Saline County 355 Golf Course Rd., Eldorado • (618) 273-9002 • no website	18: 70 / 5,975 / 66.9 / 108	Saline
Shawnee Hills 1110 Shawnee Hills Rd., Harrisburg • (618) 253-7294 • https://www.facebook.com/playgolffhere/	9: 36 / 2,948 / 35.1 / 128	Saline
Sparta 19 Fairway Dr., Sparta • (618) 443-4911 • no website	18: 35 / 2,981 / 32.7 / 101	Randolph
Stardust 14756 Stardust Rd., Johnston City • (618) 983-8822 https://m.facebook.com/StardustGolfCourse/	9: 36 / 2,972 / 35.0 / 129	Williamson
Stone Creek 503 Stone Creek Dr., Makanda • (618) 457-5455 • www.stonecreekgolf.com	18: 72 / 6,875 / 74.0 / 140	Jackson
Union County 430 E. Jefferson St., Anna • (618) 833-7912 • www.uccggolf.com	18: 71 / 6,613 / 71.4 / 132	Saline
Vandalia 1110 S. 8th St., Vandalia • (618) 283-1365 • no website	9: 35 / 2,782 / 34.6 / 113	Fayette

INDIANA OUTLYING

Aberdeen 245 Tower Rd., Valparaiso • (219) 462-5050 • www.golfataberdeen.com	18: 72 / 6,917 / 73.0 / 134	Mike Higdon
Beechwood 2222 Woodlawn Dr., LaPorte • (219) 362-2651 • www.thebeachwoodgolfcourse.com	18: 72 / 6,657 / 72.8 / 129	
Birck Boilermaker Kampen Ackerman 1300 Cherry Ln., West Lafayette • (765) 494-3139 • www.purduegolf.com	18: 72 / 7,253 / 76.5 / 145 18: 71 / 6,436 / 70.3 / 124	
Blackthorn 6100 Nimitz Pkwy., South Bend • (574) 232-4653 • www.blackthorn.com	18: 72 / 7,105 / 75.2 / 135	Rich Love
The Brassie 1110 Pearson Rd., Chesterton • (219) 921-1192 • www.thebrassie.com	18: 72 / 7,008 / 74.3 / 137	Deane Borcherding
Briar Leaf 3233 N. State Rd., LaPorte • (219) 326-1992 • www.briarleaf.com	18: 72 / 6,850 / 73.2 / 132	Jay Williams
Brickyard Crossing 4400 W. 16th St., Speedway • (317) 484-6572 • www.brickyardcrossing.com	18: 72 / 6,994 / 74.5 / 137	Jeff Schroeder
Creekside Meadows 3: 2335 Clifford Rd., Valparaiso • (219) 531-7888 • www.creeksidegolfcourse.com	Glen 9: 36 / 3,270 / 36.0 / 125	
Curtis Creek 5385 S. 1080 W., Rensselaer (east of) • (219) 866-7729 • www.curtiscreekcountryclub.com	18: 72 / 6,284 / 70.6 / 117	
Duck Creek 636 N. 700 W., Hobart • (219) 759-5870 • www.duckcreekgolfcourse.com	18: 70 / 5,338 / 70.0 / 113	Ken Habhan (GM)
Elbel Park 26595 Auten Rd., South Bend • (574) 271-9180 • www.sbparkgolf.org/elbel/	18: 70 / 6,885 / 70.7 / 113	
Erskine Park 4200 Miami Rd., South Bend • (574) 291-3216 • www.sbparkgolf.org/erskine/	18: 70 / 6,098 / 68.5 / 120	
Forest Park 1155 Sheffield Dr., Valparaiso • (219) 531-7888 • www.forestparkgolfcourse.com	18: 70 / 5,642 / 67.2 / 114	

The Fort 5200 N. Post Rd., Indianapolis • (317) 543-9597 • www.thefortgolfcourse.com	18: 72 / 7,148 / 74.4 / 139	
French Lick Resort Ross Dye Valley Links Bendelow 8670 W. State Rd. 56, French Lick • (888) 936-9360 • www.frenchlick.com	18: 70 / 7,030 / 72.3 / 135 18: 72 / 8,102 / 80.0 / 148 9: 36 / 3,478 /	
Harrison Hills 413 E. New St., Attica • (765) 762-1135 • www.harrisonhills.com	18: 72 / 6,820 / 72.6 / 131	Geoff Curtis (GM)
Hazelden 3705 E. Ind. 16 • (219) 275-7771 • www.hazeldencountryclub.com	18: 70 / 5,137 / 68.4 / 111	
Hulman Links 990 N. Chamberlain St., Terre Haute • (812) 877-2096 • www.hulmanlinks.com	18: 72 / 7,225 / 74.9 / 144	David Kennedy
Legacy Hills 299 W. Johnson Rd., LaPorte • (219) 324-4777 https://m.facebook.com/Legacy-Hills-Golf-Club-Inc-113554758679199/	18: 72 / 6,600 / unrated	
LuGene Links 8687 N 300 W, Lake Village • (219) 992-3337 • no website	9: 36 / 3,200 / 34.9 / 112	Gene Berry
Michigan City 4000 E. Michigan Blvd., Michigan City • (219) 873-1516 • www.michiganacitygolfcourse.com	South 18: 72 / 6,169 / 68.7 / 113 North 18: 60 / 3,531 / 58.2 / 90	
Mink Lake 636 N. Calumet Ave., Valparaiso • (219) 462-2585 • no website	9: 35 / 3,000 / 33.5 / 102	
Notre Dame Burke US 933 at Dorr Rd. (east) • (574) 631-6425 • http://burkegolfcourse.nd.edu/	9: 35 / 3,211 / 35.5 / 116	John Foster
Notre Dame Warren 110 Warren Golf Course, Notre Dame • (574) 631-4653 • www.warregolfcourse.com	18: 71 / 7,020 / 74.6 / 135	John Foster
Robbinhurst 383 W. County Rd. 875 N., Portage • (219) 762-9711 • www.robbinhurst.com	18: 68 / 5,629 / 66.5 / 111	Andrew Elderkin
Sandy Pines 10527 Bunker Dr., DeMotte • (877) 987-3611 • www.sandypinesgc.com	18: 72 / 6,801 / 72.2 / 135	Brad Burvan
Studebaker 718 E. Calvert St., South Bend • (574) 287-6634 • www.sbparkgolf.org/studebaker/	9: 29 / 1,898 / unrated	
Swan Lake 5203 Plymouth Tr., Plymouth • (800) 935-5545 • http://swanlakeresort.com	Black 18: 72 / 7,112 / 74.2 / 129 Silver 18: 72 / 6,825 / 72.0 / 126	
Trophy Club 3875 N. State Rd. 52, Lebanon • (765) 482-7272 • www.thetrophyclubgolf.com	18: 72 / 7,317 / 75.3 / 138	B.G. Winings

WISCONSIN

Abbey Springs 1 Country Club Dr., Fontana • (262) 275-6113 • www.abbeysprings.com	18: 72 / 6,466 / 71.4 / 133	Jerry Mortier (GM)
Big Oaks 6117 123rd Pl., Pleasant Prairie • (262) 694-4200 • www.bigoaksgolf.com	18: 72 / 5,848 / unrated 9: 36 / 2,962 / unrated	Jose Reyes
Blackwolf Run 1111 W. Riverside Dr., Kohler • (866) 847-4856 • www.destinationkohler.com	River 18: 72 / 7,404 / 76.2 / 151 Meadow Valleys 18: 72 / 7,250 / 75.1 / 145	
The Bog 3121 County Hwy. 1, Saukville • (800) 484-3264 • www.golfthebog.com	18: 72 / 7,110 / 74.9 / 142	

Brighton Dale Links 830 248th Ave., Kansasville • (262) 878-1440 • www.co.kenosha.wi.us/publicworks/golf	Blue Spruce 18: 72 / 6,687 / 72.0 / 129 Red Pine 18: 72 / 7,024 / 72.9 / 132 White Birch 18: 72 / 6,977 / 73.3 / 130	
Bristol Oaks 16801 75th St., Bristol • (262) 857-2302 • www.bristoloaks.com	18: 72 / 6,319 / 70.1 / 120	Frank Blum (GM)
Brown Deer Park 7625 N. Range Line Rd., Milwaukee • (414) 352-8080 • http://milwaukeecountygolfcourses.com	18: 71 / 6,716 / 72.6 / 132	
Country Club Estates 365 Pottawatomi Dr., Fontana • (262) 275-3705 • www.countryclubestatesgolf.com	9: 35 / 3,011 / 32.3 / 121	
Delbrook 700 S. 2nd St., Delavan • (262) 728-3966 • www.delbrookgc.com	North 9: 35 / 3,183 / ratings Middle 9: 36 / 3,326 / combine South 9: 36 / 3,266 / on 9s	Dan Piecha
Erin Hills 7169 County Rd. O, Erin • (866) 772-4769, (262) 670-8600 • www.erinhills.com	18: 72 / 7,820 / 77.9 / 145	Rich Tock
Geneva National 1221 Geneva National Ave. South, Lake Geneva • (262) 245-7000 www.genevanationalresort.com	Palmer 18: 72 / 7,171 / 74.8 / 140 Trevino 18: 72 / 7,120 / 74.5 / 137 Player 18: 72 / 7,039 / 74.4 / 138	David Winget
Grand Geneva 7036 Grand Geneva Way, Lake Geneva • (262) 248-8811 • www.grandgeneva.com	Brute 18: 72 / 6,997 / 73.8 / 136 Highlands 18: 71 / 6,167 / 71.9 / 131	
Hawk's View 7377 Krueger Rd., Lake Geneva • (262) 348-9900 • www.hawksviewgolfclub.com	Como Crossing 18: 72 / 7,032 / 73.1 / 133 Barn's Hollow 18: 54 / 2,708 / unrated	
Johnson Park 6200 Northwestern Ave., Racine • (262) 637-5068 • www.racinegolfonline.com	18: 72 / 6,703 / 71.5 / 124	
Lake Lawn Resort 2400 E. Geneva St., Delavan • (262) 728-2347 • www.lakelawnresort.com	18: 70 / 6,418 / 69.2 / 120	Jeff Selgren
Lawsonia W2615 S. Valley View Dr., Green Lake • (920) 294-3320 • www.lawsonia.com	Links 18: 72 / 6,853 / 72.8 / 130 Woodlands 18: 72 / 6,618 / 72.7 / 132	Jeff Kleinke
Nippersink Resort N1055 Tombeau Rd., Genoa City • (262) 279-6311 • www.nippersinkresort.com	18: 71 / 6,652 / 69.9 / 119	Tracy Heim
Petrifying Springs 4909 7th St., Kenosha • (262) 552-9052 • www.co.kenosha.wi.us/publicworks.golf	18: 70 / 5,979 / 67.8 / 119	Chris Adams
Sand Valley 1697 Leopold Way, Nekeosa • (888) 651-5539 • www.sandvalleygolfresort.com	SV 18: 72 / 6,909 / 72.6 / 128 Mammoth Dunes 18: 72 / 6,935 / 72.4 / 132 The Sandbox 17: 51 / 1,652 / no rating	
Shoop Park 4510 Lighthouse Dr., Racine • (262) 681-9714 • www.racinegolfonline.com	9: 34 / 2,631 / 35.5 / 113	
Spring Valley 23913 Wilmot Rd., Salem • (262) 862-2626 • www.springvalleyccsalem.com	18: 70 / 6,354 / 70.1 / 119	John Wagner
Twin Lakes 1230 Legion Dr., Twin Lakes • (262) 877-2500 • www.tlccgolf.com	18: 70 / 5,930 / 67.5 / 116	Chad Cantwell
University Ridge 9002 County Rd. PD, Verona • (800) 897-4343 • www.universityridge.com	18: 72 / 6,888 / 73.2 / 142	Mike Gaspard

Washington Park 9: 35 / 2,759 / unrated
2801 12th St., Racine • (262) 635-0118 • www.racinegolfonline.com

Whistling Straits Straits 18: 72 / 7,790 / 77.2 / 152
Irish 18: 72 / 7,201 / 75.6 / 146
N8501 Hwy. L.S. Haven • (800) 618-5535 • www.destinationkohler.com

MICHIGAN

Angels Crossing 18: 72 / 7,169 / 74.3 / 135
3600 E. West (Schoolcraft) Ave., Vicksburg • (269) 694-2700 • www.golfangelscrossing.com

Arcadia Bluffs 18: 72 / 7,300 / 75.7 / 146
14710 Northwood Hwy., Arcadia • (800) 494-8666 • https://arcadiabluffs.com

Bay Harbor Preserve / Links Quarry 18: 71 / 6,784 / 72.9 / 142
9: 36 / 3,341 / 73.0 / 145 (Links to Quarry)
5800 Coastal Ridge Dr., Bay Harbor • (231) 439-4085 • www.bayharbortgolf.com

Belvedere 18: 72 / 6,943 / 73.7 / 134
5371 Marion Center Rd., Charlevoix • (866) 547-2611 • www.belvederegolfclub.com

Black Lake 18: 72 / 7,035 / 74.8 / 143
2800 Maxon Rd., Onaway • (989) 733-4653 • www.blacklakegolf.com

Eagle Eye 18: 72 / 7,323 / 75.9 / 145
15500 Chandler Rd., Bath • (517) 903-8064 • www.hawkhollow.com/eagle-eye-golf-course/

Forest Dunes 18: 72 / 7,116 / 75.2 / 146
Loop / Red 18: 70 / 6,786 / to be rated – counterclockwise routing
Loop / Black 18: 70 / 6,861 / to be rated – clockwise routing
6376 Forest Dunes Dr., Roscommon • (989) 275-0700 • www.forestdunesgolf.com

Grand Beach 9: 36 / 2,955 / 68.6 / 122
Grand Beach • (269) 469-4888 • www.grandbeach.org/pro_shop.html

Grand Traverse Bear 18: 72 / 7,078 / 76.3 / 148
Wolverine 18: 72 / 7,043 / 71.1 / 138
Spruce Run 18: 70 / 6,304 / 71.1 / 134
100 Grand Traverse Village Blvd., Acme • (231) 534-6000
https://www.grandtraverseresort.com

Marquette Heritage 18: 71 / 6,260 / 70.0 / 124
Greywalls 18: 71 / 6,828 / 73.0 / 144
1075 Grove St., Marquette • (906) 225-0721 • www.marquettetgolfclub.com

Harbor Shores 18: 72 / 6,861 / 71.7 / 143
201 Graham Ave., Benton Harbor • (269) 927-4653 • www.harborshoresgolf.com Ross Smith (GM)

HawksHead 18: 72 / 7,003 / 72.8 / 129
523 HawksNest Dr., South Haven • (269) 639-2121 • www.hawksheadlinks.com Larry Tebelak

Lake Michigan Hills 18: 72 / 6,911 / 73.9 / 135
2520 Kerlikowski Rd., Benton Harbor • (269) 849-4653 • www.lakemichiganhills.com

Lochenheath 18: 72 / 7,280 / 77.2 / 148
7951 Turnberry Cir., Williamsburg • (231) 938-9800 • www.lochenheath.com

Pilgrim's Run 18: 73 / 7,093 / 74.4 / 143
11401 Newcosta Ave., Pierson • (888) 533-7742 • www.pilgrimsrun.com

Timberstone 18: 72 / 6,938 / 74.5 / 150
N. 3332 Pine Mountain Rd., Iron Mountain • (906) 776-0111 • www.pinemountainresort.com

Otsego Classic 18: 72 / 6,267 / 69.8 / 121
Tribute 18: 72 / 7,155 / 74.1 / 134
696 M-32 East, Gaylord • (800) 752-5510 • www.otsegoclub.com

St. Ives 18: 72 / 6,702 / 73.1 / 146
9900 St. Ives Dr., Stanwood • (800) 972-4837 • http://www.tullymoregolf.com

Tullymore 18: 72 / 7,250 / 76.0 / 150
11969 Tullymore Dr., Stanwood • (800) 972-4837 • http://www.tullymoregolf.com

Whittaker Woods 18: 72 / 7,071 / 74.3 / 144
12578 Wilson Rd., New Buffalo • (269) 469-3400 • www.golfwhittaker.com Steve Dell

CHICAGOLAND RANGES

STAND-ALONE OUTDOOR FACILITIES / INDOOR DOMES

BallyBunion 4200 Rt. 83, Long Grove (847) 634-3363
Bartlett Golf Center 1301 W. Lake St., Bartlett (847) 830-9385
Better Shots 825 Tyrell Rd., Gilberts (847) 697-5000
Birdies & Eagles 800 McDonald Rd., South Elgin (847) 931-2233
Bobby's Hunt Club 491 S. Hunt Club Rd., Gurnee (847) 549-6090
Boulder Golf Range 2900 Beverly Rd., Hoffman Estates (847) 426-1588
Buffalo Grove Sports Center

801 McHenry Rd., Buffalo Grove (847) 353-7575
30 W. Madison St., Maywood (708) 344-2700
Central Park Range 5799 Central Ave., Portage, Ind. (219) 762-4653
Crete Family Fun Center 955 Main St., Crete (708) 672-7991
Deer Run Family Golf 11007 Rt. 120, Woodstock (815) 338-9701
Diversey Driving Range 141 W. Diversey Pkwy., Chicago (312) 742-7929
Douglas Park Learning 1401 S. Sacramento Ave., Chicago (312) 747-7670
Fore Seasons 4418 Buhl Rd., Crystal Lake (815) 444-8100
Golf Farm 2100 N. Rt. 12, Wauconda (847) 526-4000
Green Garden Golf Dome 9511 W. Monee-Manhattan Rd., Frankfort (815) 469-3350
Green Valley Golf 26W101 Lake St., Hanover Park (630) 289-6600
Golf Learning Center Hamilton Lakes

500 Park Blvd., Itasca (630) 773-7997
1150 E. Golf Rd., Des Plaines (847) 296-5764
Highland Park Learning 2205 Skokie Valley Rd., Highland Park (847) 433-3422
Lippold Park 1 E. Crystal Lake Ave., Crystal Lake (815) 459-0680
Master Golf 425 S. Rt. 45, Grayslake (847) 223-6886
Mid Iron (and 3 holes) 12680 S. Bell Rd., Palos Park (630) 257-3340
Mistwood Golf Dome 730 N. Bolingbrook Dr., Bolingbrook (630) 739-7600
Oakton Range 2800 W. Oakton Ave., Park Ridge (847) 692-3580
Paradise Golf Supply 1500 N. Main St., Crown Point, Ind. (219) 313-6769
Perfection Park 6215 S. Bridge St., Yorkville (630) 553-6855
Partner Golf Center 6615 W. Irving Park Rd., Chicago (773) 286-2060
Pro Circle 1810 Rt. 12, Spring Grove (815) 675-2747
Riedy's Tee Time 1400 Maple Ave., Lisle (630) 852-5759
Skokie Sports Park 3459 Oakton St., Skokie (847) 674-1500
Sports Zone Family Fun 100 Business Rt. 30, Aurora (630) 820-8624
Sugar Grove Family Fun Rt. 47 & Jericho Rd., Sugar Grove (630) 466-3866
Sunset Meadows Range 811 S. Dwyer Ave., Arlington Heights (847) 394-5885
T-Time Golf 13750 W. 159th St., Homer Glen (708) 301-6500
Top Golf 3211 Odyssey Ct., Naperville (630) 596-1000
Top Golf 699 W. Thorndale Ave., Wood Dale (630) 595-4653
Westland Golf 11900 Algonquin Rd., Huntley (847) 669-0204
White Pines Golf Dome 500 W. Jefferson St., Bensenville (630) 422-1060
Woodland Trails 1500 E. Euclid Ave., Mount Prospect (847) 296-4563

TOUR GUIDE



Kevin Strelman 148th WGR
\$1,523,642 in 27 starts 78th \$ list
Best: 6th Pebble Beach
70.436 scoring average



D.A. Points 373rd WGR
\$377,265 in 25 starts 173th \$ list
Best: 33rd T of Champions
73.019 scoring average



Luke Donald 331st WGR
\$81,989 in 9 starts 218th \$ list
Best: T32 Shriners
71.770 scoring average



Mark Wilson ---- WGR
\$33,348 in 11 starts 234th \$ list
Best: T63 John Deere Classic
73.086 scoring average



Scott Langley Web.com Tour
\$279,732 in 22 starts 3rd Web
Best: 1st Panama
69.740 scoring average



Brad Hopfinger Web.com Tour
\$80,357 in 26 starts 68th Web
Best: T4 Bahamas
70.580 scoring average



Luke Guthrie Web.com Tour
\$57,723 in 22 starts 89th Web
Best: T11 Utah
70.630 scoring average

FEC: FedEx Cup; through Tour Championship, World Golf Ranking

NEXT ISSUE

Update on Jackson Park, Canal Shores;
Len Ziehm on Sand Valley's Mammoth course